

The background is a vibrant yellow. It is decorated with several abstract, organic shapes in shades of blue and green. These shapes are interconnected and feature white circular cutouts of varying sizes. The overall aesthetic is modern and graphic.

IW Foul Sewer Asset Alterations



BUSCONNECTS DUBLIN CORE BUS CORRIDORS INFRASTRUCTURE WORKS

KIMMAGE TO CITY CENTRE CORE BUS CORRIDOR SCHEME

IW FOUL SEWER ASSET ALTERATIONS. RECORDS & PROPOSED WORKS	
DRAWING SERIES NUMBER(S)	DRAWING SERIES DESCRIPTION
BCIDD-ROT-UTL_IX-0011_XX_00-DR-CU-0002	KIMMAGE TO CITY CENTRE CORE BUS CORRIDOR SCHEME. IW FOUL SEWER ASSET ALTERATIONS. COVER SHEET
BCIDD-ROT-UTL_KP-0011_XX_00-DR-CU-0002	KIMMAGE TO CITY CENTRE CORE BUS CORRIDOR SCHEME. IW FOUL SEWER ASSET ALTERATIONS. KEY PLAN
BCIDD-ROT-UTL_UD-0011_XX_00-DR-CU-0001 to 0014	KIMMAGE TO CITY CENTRE CORE BUS CORRIDOR SCHEME. IW FOUL SEWER ASSET ALTERATIONS. DRAWINGS.

\\wddubp1u20191917117117-02_WIP08 MODELS01 CAD01 DWG03 STG 3 - STATUTORY PROCESS (M)01 PLANNING11 KIMMAGECOVER SHEETSBCIDD-ROT-UTL_IX-0011_XX_00-DR-CU-0002.dwg

Disclaimer
 a. © National Transport Authority (NTA) 2022. This drawing is confidential and the copyright in it is owned by NTA. This drawing must not be either loaned, copied or otherwise reproduced in whole or in part or used for any purpose without the prior permission of NTA.
 b. This drawing is to be used for the design element identified in the titleblock. Other information shown is to be considered indicative only. The drawing is to be read in conjunction with all other relevant design drawings.
 c. O.S. data used for plans are printed under © Ordnance Survey Ireland Government of Ireland. All rights reserved. Licence Number 2022/OSI_NMA_180 National Transport Authority. All elevations are in metres and relate to OSI Geoid Model (OSGM15) Mean Head. All Co-ordinates are in Irish Transverse Mercator Grid (ITM) as defined by OSI active local GPS station.
 d. Information concerning the position of apparatus shown on this drawing is based on drawings supplied by the utility owners and/or the utility works contractor, whilst every care has been taken in the preparation of this drawing, positions should be taken as approximate and are intended for general guidance only and no representation is made by the NTA as to the accuracy, completeness, sufficiency or otherwise of this drawing and the position of the apparatus. The information contained herein does not purport to be comprehensive or final as the apparatus is subject to being altered and/or superceded. Recipients should not rely on this information. Any liabilities are hereby expressly disclaimed.
 e. The information contained herein has been provided by the NTA but does not purport to be comprehensive or final. Recipients should not rely on the information. Neither the NTA nor any of its directors, officers, employees, agents, stakeholders or advisers make any representation or warranty as to, or accept any liability or responsibility in relation to, the adequacy, accuracy, reasonableness or completeness of the information provided as part of this document or any matter on which the information is based (including but not limited to loss or damage arising as a result of reliance by recipients on the information or any part of it). Any liabilities are hereby expressly disclaimed.

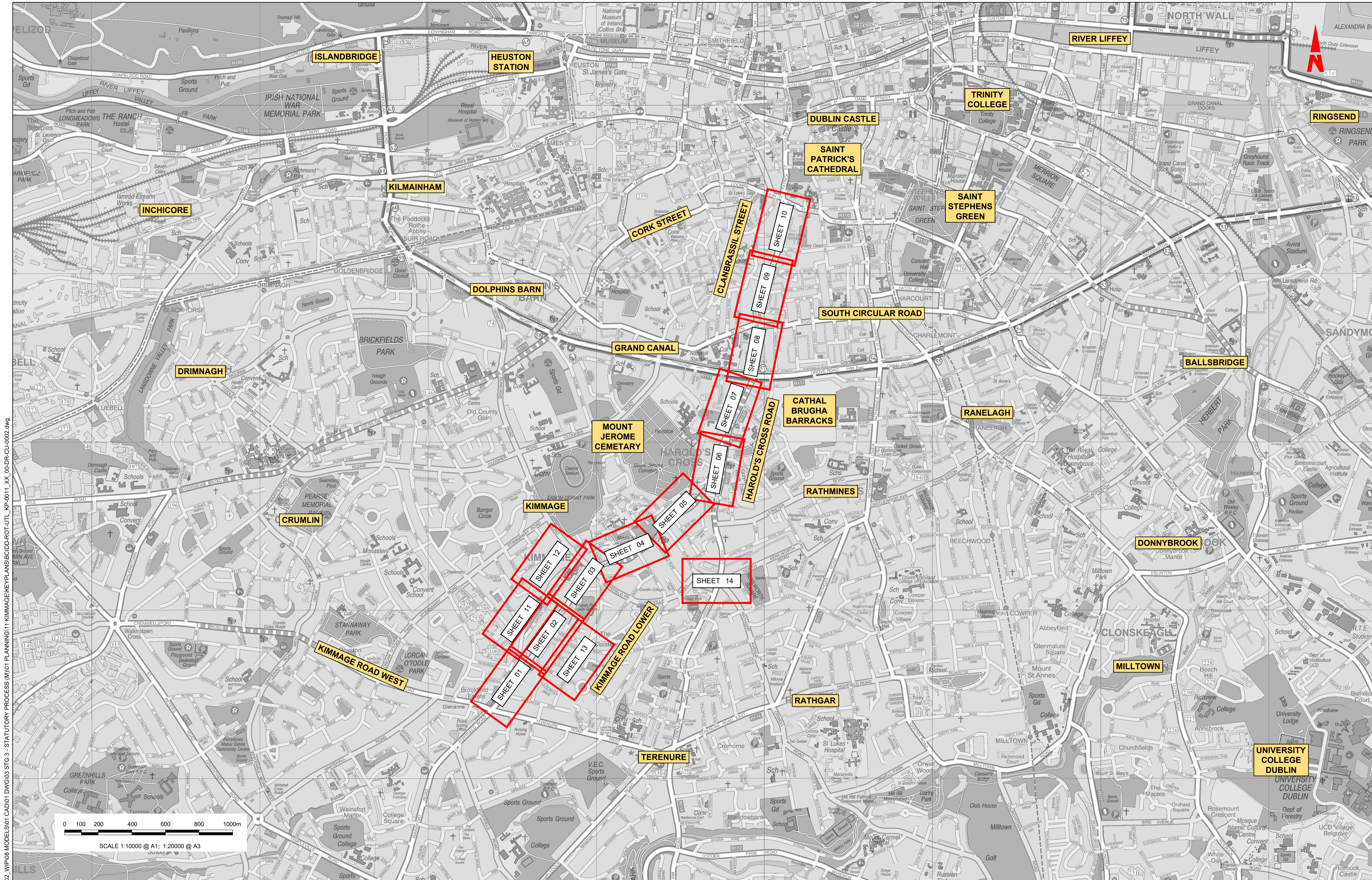
Project Ireland 2040
 Building Ireland's Future

Rev	Date	Dwn	Chk'd	App'd	Description
M01	FEB 2023	CG	SMG	SMG	ISSUE FOR PHASE 4: PLANNING

Client NTA Údarás Náisiúnta Iompair National Transport Authority		Engineering Designer ROD TYP SA RUGHAN & O'DONOVAN		
Date FEB 2023	Scale NTS @ A1 NTS @ A3	Drawn CG	Checked SMG	Approved SMG
Programme Code BCIDD	Originator Code ROT	QMS Code		

Programme Title BUSCONNECTS DUBLIN CORE BUS CORRIDORS INFRASTRUCTURE WORKS			
Drawing Title KIMMAGE TO CITY CENTRE CORE BUS CORRIDOR SCHEME IW FOUL SEWER ASSET ALTERATIONS COVER SHEET			
Drawing File Name BCIDD-ROT-UTL_IX-0011_XX_00-DR-CU-0002	Sheet Number 02 of 0	Status A	Rev M01

DO NOT SCALE USE FIGURED DIMENSIONS ONLY



W:\000000\19117117-02_WIPO8 MODELS\01 CAD\01 PLANNING\11 KIMMAGE\PLANS\BCIDD-ROT-UTL_KP-0011_XX_00-DR-CU-0002.dwg
 2023/02/23 14:02:00

0 100 200 400 600 800 1000m
 SCALE 1:10000 @ A1; 1:20000 @ A3

Disclaimers:
 a. © National Transport Authority (NTA) 2022. This drawing is confidential and the copyright in it is owned by NTA. This drawing must not be either loaned, copied or otherwise reproduced in whole or in part or used for any purpose without the prior permission of NTA.
 b. This drawing is to be used for the design element identified in the titleblock. Other information shown is to be considered indicative only. The drawing is to be read in conjunction with all other relevant design drawings.
 c. OS data used for plans are printed under © Ordnance Survey Ireland Government of Ireland. All rights reserved. Licence Number 2022/OSI_NMA_180 National Transport Authority. All elevations are in metres and relate to OSi Geoid Model (OSGM15) Mean Head. All Co-ordinates are in Irish Transverse Mercator Grid (ITM) as defined by OSi active local GPS station.
 d. Information concerning the position of apparatus shown on this drawing is based on drawings supplied by the utility owners and/or the utility works contractor, whilst every care has been taken in the preparation of this drawing, positions should be taken as approximate and are intended for general guidance only and no representation is made by the NTA as to the accuracy, completeness, sufficiency or otherwise of this drawing and the position of the apparatus. The information contained herein does not purport to be comprehensive or final as the apparatus is subject to being altered and/or superseded. Recipients should not rely on this information. Any liabilities are hereby expressly disclaimed.

The information contained herein has been provided by the NTA but does not purport to be comprehensive or final. Recipients should not rely on the information. Neither the NTA nor any of its directors, officers, employees, agents, stakeholders or advisers make any representation or warranty as to, or accept any liability or responsibility in relation to, the adequacy, accuracy, reasonableness or completeness of the information provided as part of this document or any matter on which the information is based (including but not limited to loss or damage arising as a result of reliance by recipients on the information or any part of it). Any liabilities are hereby expressly disclaimed.

Rev	Date	Drn	Chk'd	App'd	Description
M01	FEB 2023	CG	SMG	SMG	ISSUE FOR PHASE 4 : PLANNING

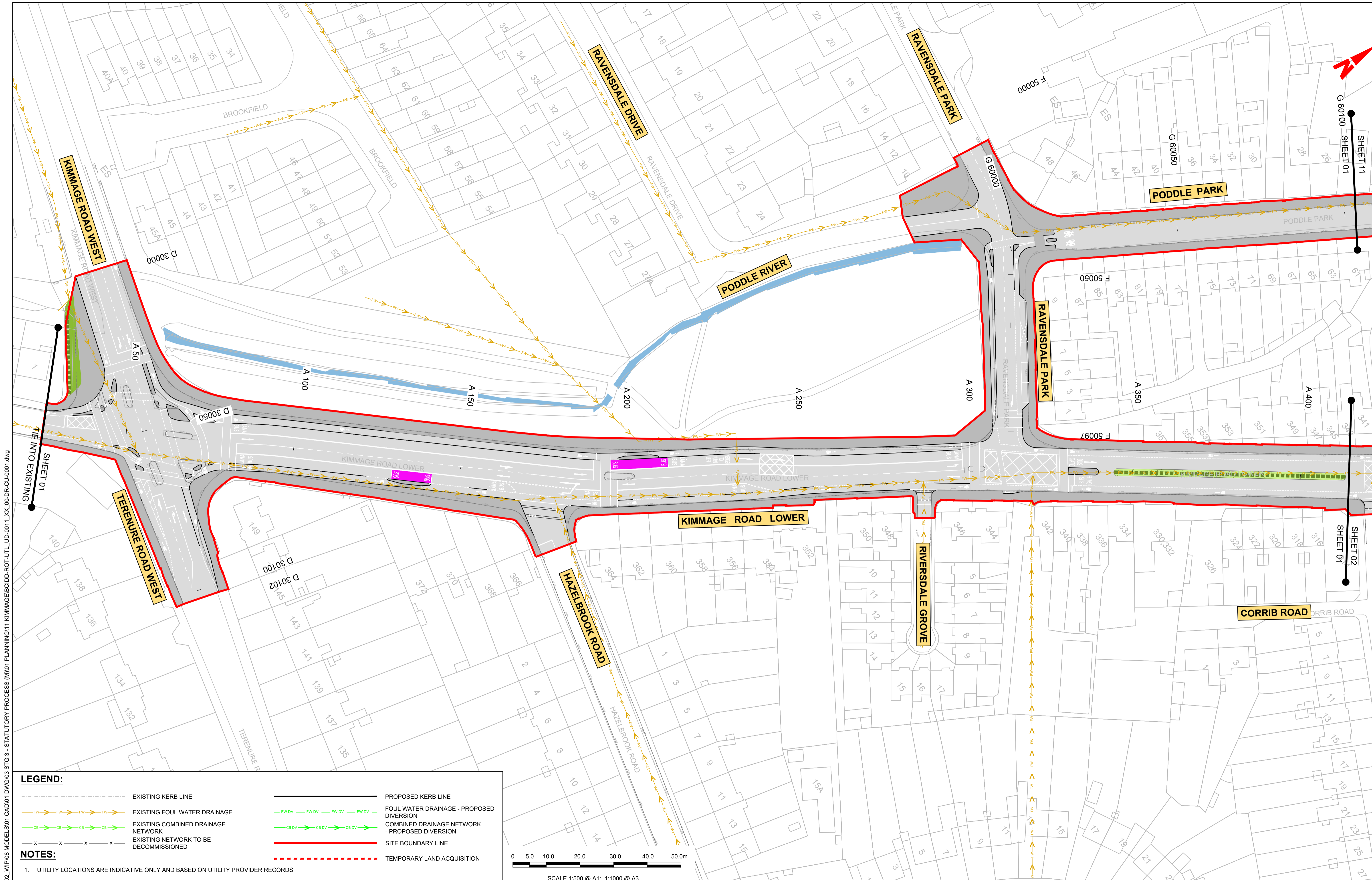
Client: **NTA**
 Údarás Náisiúnta Iompair
 National Transport Authority

Engineering Designer: **CIROD**
 TYPSA

Date	Scale	Drawn	Checked	Approved
FEB 2023	1:10,000 @ A1 1:20,000 @ A3	CG	SMG	SMG
Programme Code	Originator Code	QMS Code		
BCIDD	ROT			

Programme Title	BUSCONNECTS DUBLIN CORE BUS CORRIDORS INFRASTRUCTURE WORKS			
Drawing Title	KIMMAGE TO CITY CENTRE CORE BUS CORRIDOR SCHEME IW FOUL SEWER ASSET ALTERATIONS KEYPLAN			
Drawing File Name	Sheet Number	Status	Rev	
BCIDD-ROT-UTL_KP-0011_XX_00-DR-CU-0002	02 of 00	A	M01	

DO NOT SCALE USE FIGURED DIMENSIONS ONLY

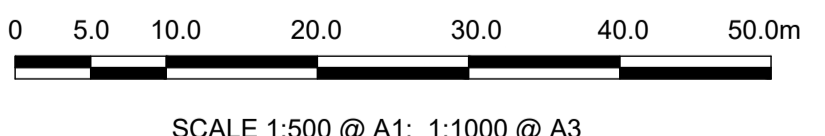


LEGEND:

- EXISTING KERB LINE
- PROPOSED KERB LINE
- EXISTING FOUL WATER DRAINAGE
- FOUL WATER DRAINAGE - PROPOSED DIVERSION
- EXISTING COMBINED DRAINAGE NETWORK
- COMBINED DRAINAGE NETWORK - PROPOSED DIVERSION
- EXISTING NETWORK TO BE DECOMMISSIONED
- SITE BOUNDARY LINE
- TEMPORARY LAND ACQUISITION

NOTES:

1. UTILITY LOCATIONS ARE INDICATIVE ONLY AND BASED ON UTILITY PROVIDER RECORDS



Disclaimer
 a. © National Transport Authority (NTA) 2022. This drawing is confidential and the copyright in it is owned by NTA. This drawing must not be either loaned, copied or otherwise reproduced in whole or in part or used for any purpose without the prior permission of NTA.
 b. This drawing is to be used for the design element identified in the titleblock. Other information shown is to be considered indicative only. The drawing is to be read in conjunction with all other relevant design drawings.
 c. O.S. data used for plans are printed under © Ordnance Survey Ireland Government of Ireland. All rights reserved. Licence Number 2022/OSI_NMA_180 National Transport Authority. All elevations are in metres and relate to OSI Geoid Model (OSGM15) Mean Head. All Co-ordinates are in Irish Transverse Mercator Grid (ITM) as defined by OSI active local GPS station.
 d. Information concerning the position of apparatus shown on this drawing is based on drawings supplied by the utility owners and/or the utility works contractor, whilst every care has been taken in the preparation of this drawing, positions should be taken as approximate and are intended for general guidance only and no representation is made by the NTA as to the accuracy, completeness, sufficiency or otherwise of this drawing and the position of the apparatus. The information contained herein does not purport to be comprehensive or final as the apparatus is subject to being altered and/or superseded. Recipients should not rely on this information. Any liabilities are hereby expressly disclaimed.
 e. The information contained herein has been provided by the NTA but does not purport to be comprehensive or final. Recipients should not rely on the information. Neither the NTA nor any of its directors, officers, employees, agents, stakeholders or advisers make any representation or warranty as to, or accept any liability or responsibility in relation to, the adequacy, accuracy, reasonableness or completeness of the information provided as part of this document or any matter on which the information is based (including but not limited to loss or damage arising as a result of reliance by recipients on the information or any part of it). Any liabilities are hereby expressly disclaimed.



Rev	Date	Drm	Chk'd	App'd	Description
M01	FEB 2023	DS	LS	SMG	ISSUED FOR PHASE 4: PLANNING

Client: **NTA** Údarás Náisiúnta Iompair National Transport Authority

Engineering Designer: **CIROD** TYPSA

Date: FEB 2023 Scale: 1:500 @ A1 1:1000 @ A3

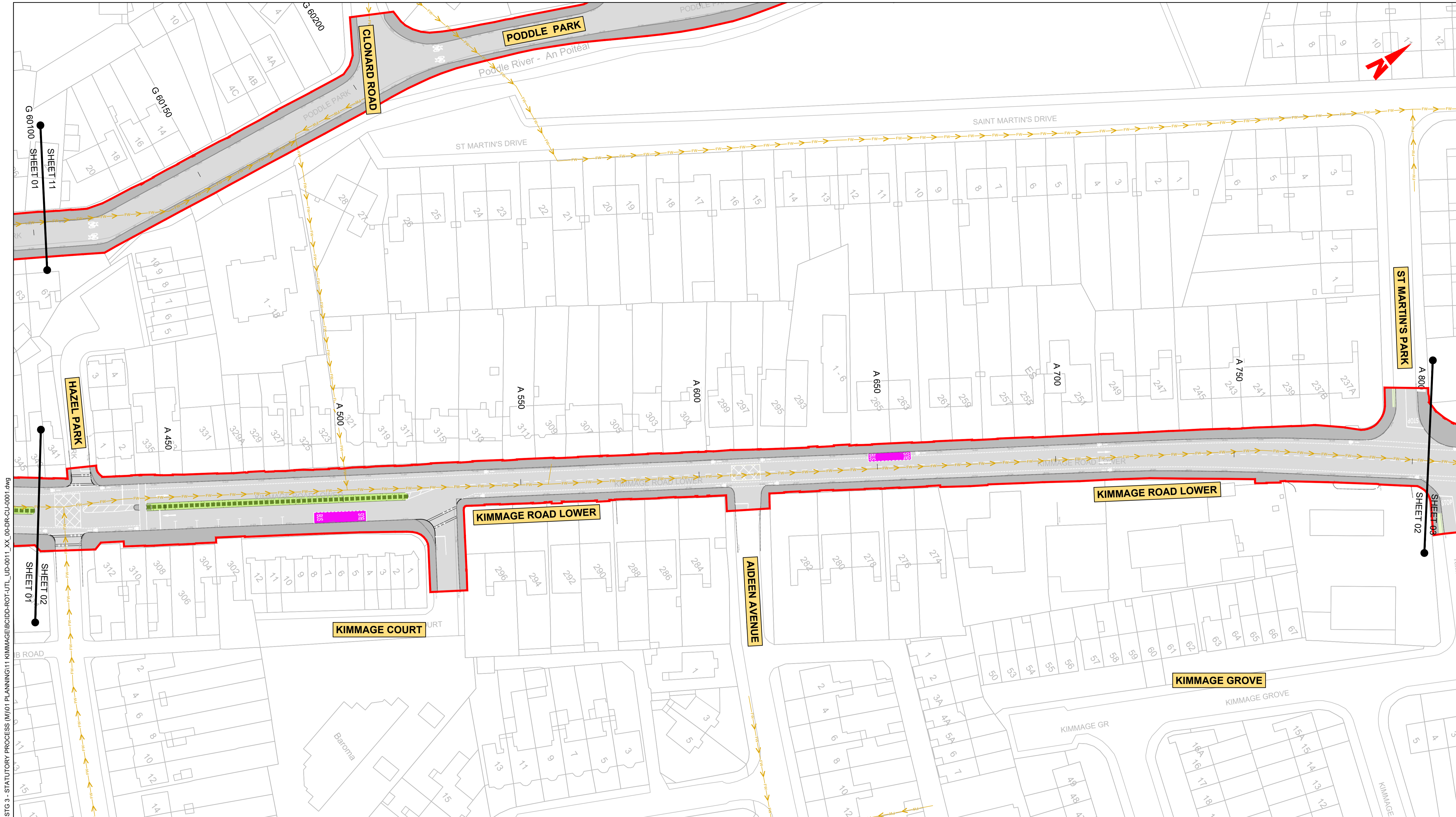
Programme Code: BCIDD Originator Code: ROT

Drawn: DS Checked: EE Approved: SMG

Programme Title			
BUSCONNECTS DUBLIN CORE BUS CORRIDORS INFRASTRUCTURE WORKS			
Drawing Title			
KIMMAGE TO CITY CENTRE CORE BUS CORRIDOR SCHEME IW FOUL SEWER ASSET ALTERATIONS			
Drawing File Name	Sheet Number	Status	Rev
BCIDD-ROT-UTL_UD-0011_XX_00-DR-CU-0001	01 of 14	A	M01

DO NOT SCALE USE FIGURED DIMENSIONS ONLY

\\produbhp11\j20191917171717-02_WIP08 MODELS\01 CAD\01 PLANNING\11 KIMMAGE\BCIDD-ROT-UTL_UD-0011_XX_00-DR-CU-0001.dwg

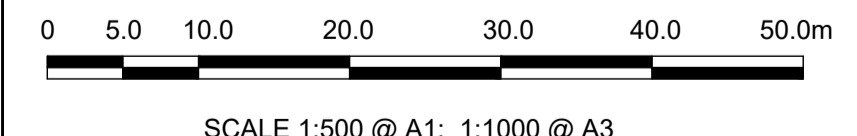


LEGEND:

- EXISTING KERB LINE
- PROPOSED KERB LINE
- EXISTING FOUL WATER DRAINAGE
- FOUL WATER DRAINAGE - PROPOSED DIVERSION
- EXISTING COMBINED DRAINAGE NETWORK
- COMBINED DRAINAGE NETWORK - PROPOSED DIVERSION
- EXISTING NETWORK TO BE DECOMMISSIONED
- SITE BOUNDARY LINE
- TEMPORARY LAND ACQUISITION

NOTES:

- UTILITY LOCATIONS ARE INDICATIVE ONLY AND BASED ON UTILITY PROVIDER RECORDS



Disclaimer:

a. © National Transport Authority (NTA) 2022. This drawing is confidential and the copyright in it is owned by NTA. This drawing must not be either loaned, copied or otherwise reproduced in whole or in part or used for any purpose without the prior permission of NTA.

b. This drawing is to be used for the design element identified in the title block. Other information shown is to be considered indicative only. The drawing is to be read in conjunction with all other relevant design drawings.

c. O.S. data used for plans are printed under © Ordnance Survey Ireland Government of Ireland. All rights reserved. Licence Number 2022/OSI_NMA_180 National Transport Authority. All elevations are in metres and relate to OSI Geoid Model (OSGM15) Mean Head. All Co-ordinates are in Irish Transverse Mercator Grid (ITM) as defined by OSI active local GPS station.

d. Information concerning the position of apparatus shown on this drawing is based on drawings supplied by the utility owners and/or the utility works contractor, whilst every care has been taken in the preparation of this drawing, positions should be taken as approximate and are intended for general guidance only and no representation is made by the NTA as to the accuracy, completeness, sufficiency or otherwise of this drawing and the position of the apparatus. The information contained herein does not purport to be comprehensive or final as the apparatus is subject to being altered and/or superceded. Recipients should not rely on this information. Any liabilities are hereby expressly disclaimed.

e. The information contained herein has been provided by the NTA but does not purport to be comprehensive or final. Recipients should not rely on the information. Neither the NTA nor any of its directors, officers, employees, agents, stakeholders or advisers make any representation or warranty as to, or accept any liability or responsibility in relation to, the adequacy, accuracy, reasonableness or completeness of the information provided as part of this document or any matter on which the information is based (including but not limited to loss or damage arising as a result of reliance by recipients on the information or any part of it). Any liabilities are hereby expressly disclaimed.



Rev	Date	Drn	Chk'd	App'd	Description
M01	FEB 2023	DS	LS	SMG	ISSUED FOR PHASE 4: PLANNING

Client

Engineering Designer

Programme Title
**BUSCONNECTS DUBLIN
CORE BUS CORRIDORS INFRASTRUCTURE WORKS**

Drawing Title
KIMMAGE TO CITY CENTRE CORE BUS CORRIDOR SCHEME
IW FOUL SEWER ASSET ALTERATIONS

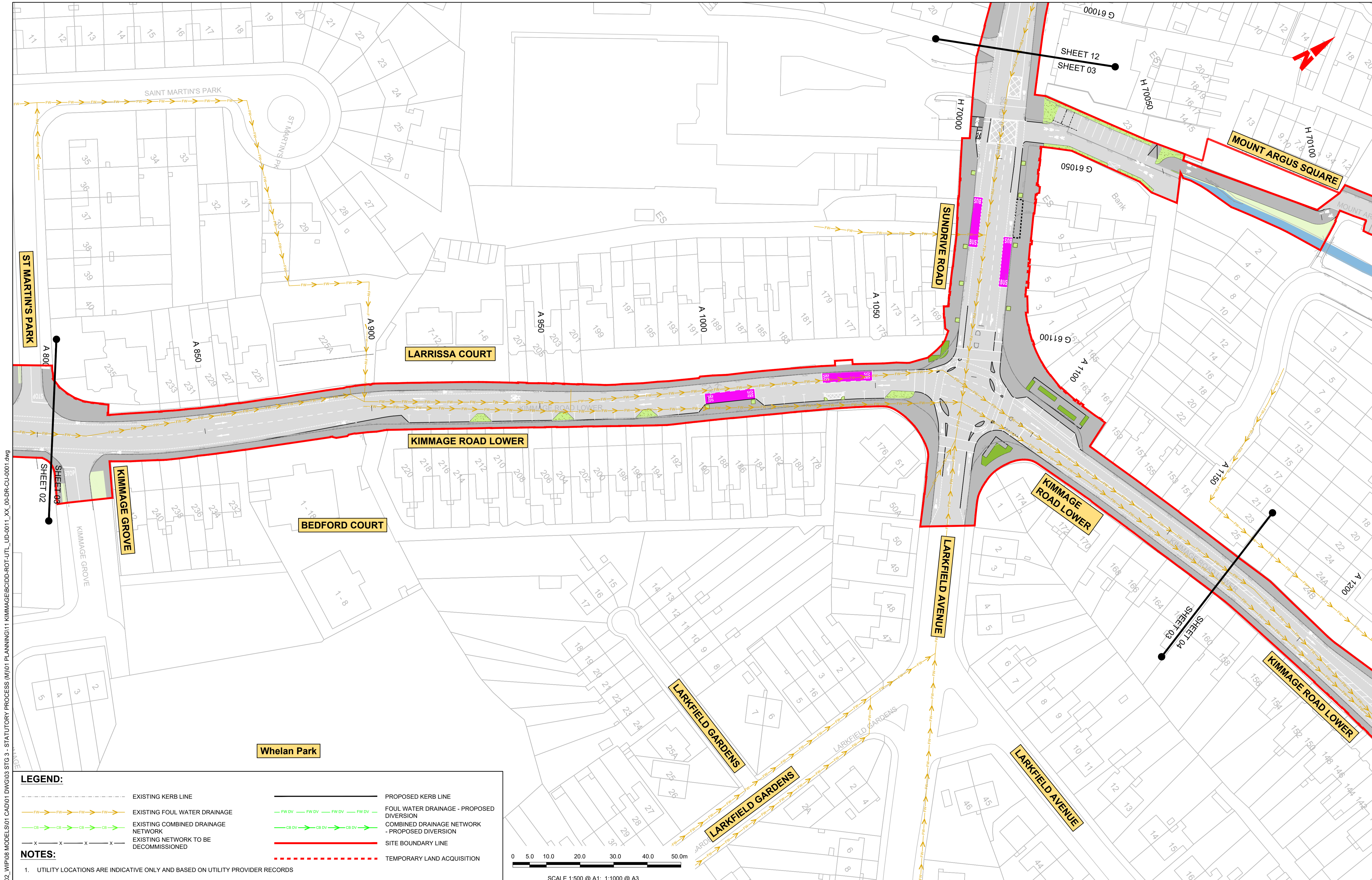
Date: FEB 2023
Scale: 1:500 @ A1
1:1000 @ A3

Drawn: DS
Checked: EE
Approved: SMG

Programme Code: BCIDD
Originator Code: ROT
QMS Code:

Drawing File Name: BCIDD-ROT-UTL_UD-0011_XX_00-DR-CU-0002
Sheet Number: 02 of 14
Status: A
Rev: M01

DO NOT SCALE USE FIGURED DIMENSIONS ONLY



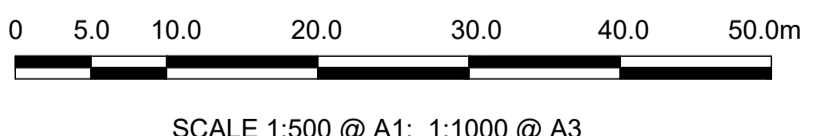
W:\000000\11\171117-02_WIP\08 MODELS\01 CAD\01 STG 3 - STATUTORY PROCESS (M)\01 PLANNING\11 KIMMAGE\BCIDD-ROT-UTL_UD-0011_XX_00-DR-CU-0001.dwg

LEGEND:

	EXISTING KERB LINE		PROPOSED KERB LINE
	EXISTING FOUL WATER DRAINAGE		FOUL WATER DRAINAGE - PROPOSED DIVERSION
	EXISTING COMBINED DRAINAGE NETWORK		COMBINED DRAINAGE NETWORK - PROPOSED DIVERSION
	EXISTING NETWORK TO BE DECOMMISSIONED		SITE BOUNDARY LINE
			TEMPORARY LAND ACQUISITION

NOTES:

- UTILITY LOCATIONS ARE INDICATIVE ONLY AND BASED ON UTILITY PROVIDER RECORDS



Disclaimer

a. © National Transport Authority (NTA) 2022. This drawing is confidential and the copyright in it is owned by NTA. This drawing must not be either loaned, copied or otherwise reproduced in whole or in part or used for any purpose without the prior permission of NTA.

b. This drawing is to be used for the design element identified in the titleblock. Other information shown is to be considered indicative only. The drawing is to be read in conjunction with all other relevant design drawings.

c. O.S. data used for plans are printed under © Ordnance Survey Ireland Government of Ireland. All rights reserved. Licence Number 2022/OSI_NMA_180 National Transport Authority. All elevations are in metres and relate to OSI Geoid Model (OSGM15) Mean Head. All Co-ordinates are in Irish Transverse Mercator Grid (ITM) as defined by OSI active local GPS station.

d. Information concerning the position of apparatus shown on this drawing is based on drawings supplied by the utility owners and/or the utility works contractor, whilst every care has been taken in the preparation of this drawing, positions should be taken as approximate and are intended for general guidance only and no representation is made by the NTA as to the accuracy, completeness, sufficiency or otherwise of this information. The information contained herein does not purport to be comprehensive or final as the apparatus is subject to being altered and/or superseded. Recipients should not rely on this information. Any liabilities are hereby expressly disclaimed.

e. The information contained herein has been provided by the NTA but does not purport to be comprehensive or final. Recipients should not rely on the information. Neither the NTA nor any of its directors, officers, employees, agents, stakeholders or advisers make any representation or warranty as to, or accept any liability or responsibility in relation to, the adequacy, accuracy, reasonableness or completeness of the information provided as part of this document or any matter on which the information is based (including but not limited to loss or damage arising as a result of reliance by recipients on the information or any part of it). Any liabilities are hereby expressly disclaimed.



Rev	Date	Drn	Chk'd	App'd	Description
M01	FEB 2023	DS	LS	SMG	ISSUED FOR PHASE 4: PLANNING

Client: **NTA**
Udarás Náisiúnta Iompair
National Transport Authority

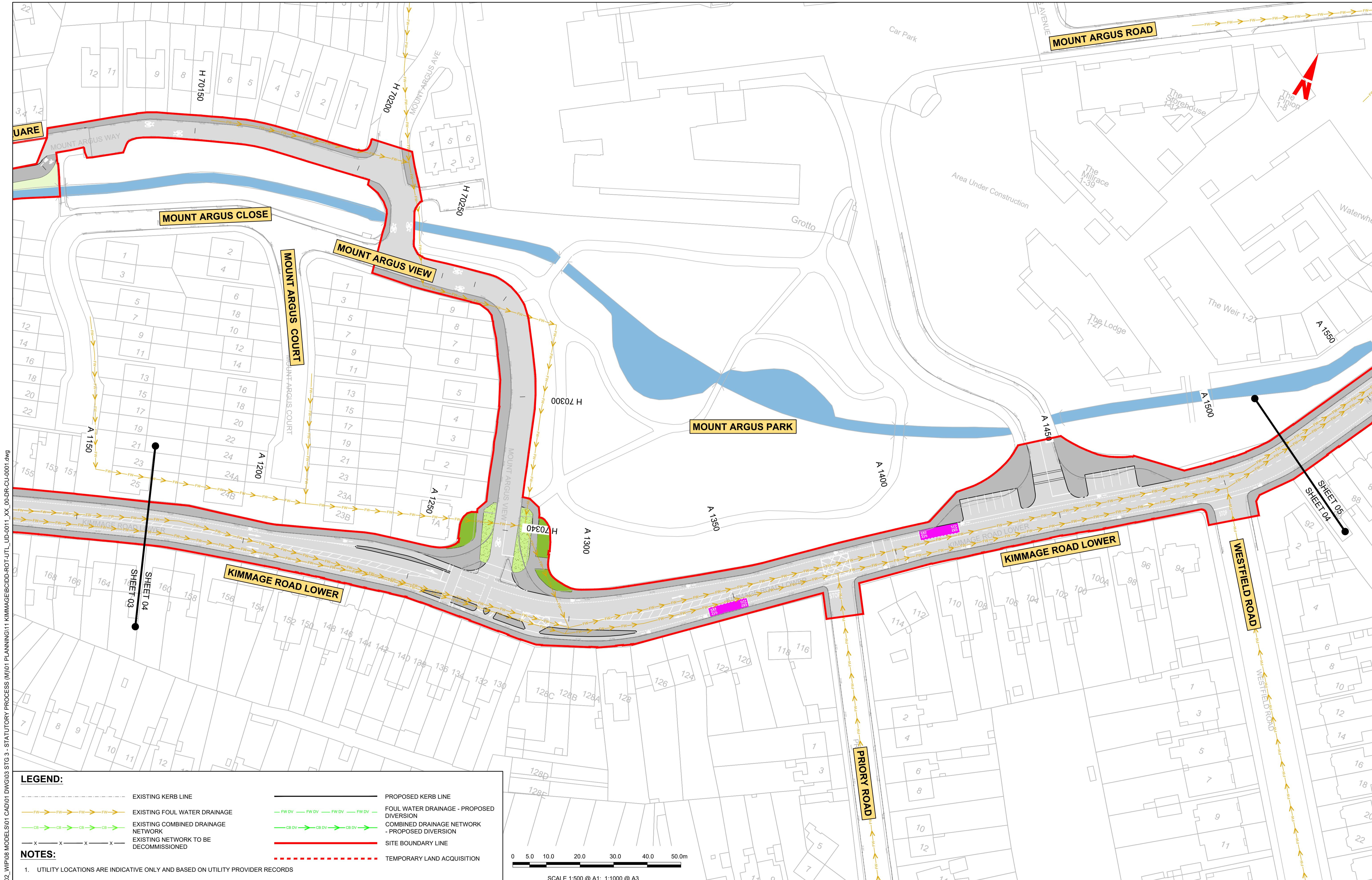
Engineering Designer: **CIROD**
TYPSA

Date: FEB 2023 | Scale: 1:500 @ A1, 1:1000 @ A3 | Drawn: DS | Checked: EE | Approved: SMG

Programme Code: BCIDD | Originator Code: ROT | QMS Code:

Programme Title: BUSCONNECTS DUBLIN CORE BUS CORRIDORS INFRASTRUCTURE WORKS			
Drawing Title: KIMMAGE TO CITY CENTRE CORE BUS CORRIDOR SCHEME IW FOUL SEWER ASSET ALTERATIONS			
Drawing File Name: BCIDD-ROT-UTL_UD-0011_XX_00-DR-CU-0003	Sheet Number: 03 of 14	Status: A	Rev: M01

DO NOT SCALE USE FIGURED DIMENSIONS ONLY

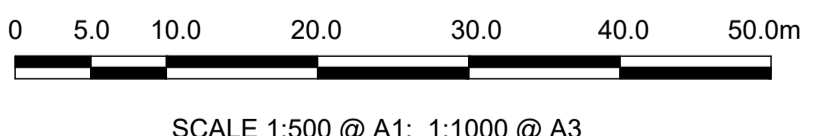


LEGEND:

	EXISTING KERB LINE		PROPOSED KERB LINE
	EXISTING FOUL WATER DRAINAGE		FOUL WATER DRAINAGE - PROPOSED DIVERSION
	EXISTING COMBINED DRAINAGE NETWORK		COMBINED DRAINAGE NETWORK - PROPOSED DIVERSION
	EXISTING NETWORK TO BE DECOMMISSIONED		SITE BOUNDARY LINE
			TEMPORARY LAND ACQUISITION

NOTES:

- UTILITY LOCATIONS ARE INDICATIVE ONLY AND BASED ON UTILITY PROVIDER RECORDS



\\produbhp1\j2019\1911719117-02_WIP08 MODELS\01 CAD\01 DWG\03 STG 3 - STATUTORY PROCESS (M)\01 PLANNING\11 KIMMAGE\BCIDD-ROT-UTL_UD-0011_XX_00-DR-CU-0001.dwg

Disclaimer:

a. © National Transport Authority (NTA) 2022. This drawing is confidential and the copyright in it is owned by NTA. This drawing must not be either loaned, copied or otherwise reproduced in whole or in part or used for any purpose without the prior permission of NTA.

b. This drawing is to be used for the design element identified in the titlebox. Other information shown is to be considered indicative only. The drawing is to be read in conjunction with all other relevant design drawings.

c. O.S. data used for plans are printed under © Ordnance Survey Ireland Government of Ireland. All rights reserved. Licence Number 2022/OSI_NMA_180 National Transport Authority. All elevations are in metres and relate to OSI Geoid Model (OSGM15) Mean Head. All Co-ordinates are in Irish Transverse Mercator Grid (ITM) as defined by OSI active local GPS station.

d. Information concerning the position of apparatus shown on this drawing is based on drawings supplied by the utility owners and/or the utility works contractor, whilst every care has been taken in the preparation of this drawing, positions should be taken as approximate and are intended for general guidance only and no representation is made by the NTA as to the accuracy, completeness, sufficiency or otherwise of this drawing and the position of the apparatus. The information contained herein does not purport to be comprehensive or final as the apparatus is subject to being altered and/or superceded. Recipients should not rely on this information. Any liabilities are hereby expressly disclaimed.

e. The information contained herein has been provided by the NTA but does not purport to be comprehensive or final. Recipients should not rely on the information. Neither the NTA nor any of its directors, officers, employees, agents, stakeholders or advisers make any representation or warranty as to, or accept any liability or responsibility in relation to, the adequacy, accuracy, reasonableness or completeness of the information provided as part of this document or any matter on which the information is based (including but not limited to loss or damage arising as a result of reliance by recipients on the information or any part of it). Any liabilities are hereby expressly disclaimed.



Rev	Date	Drm	Chk'd	App'd	Description
M01	FEB 2023	DS	LS	SMG	ISSUED FOR PHASE 4: PLANNING

Client: **NTA**
Údarás Náisiúnta Iompair
National Transport Authority

Engineering Designer: **CIROD**
TYPSA

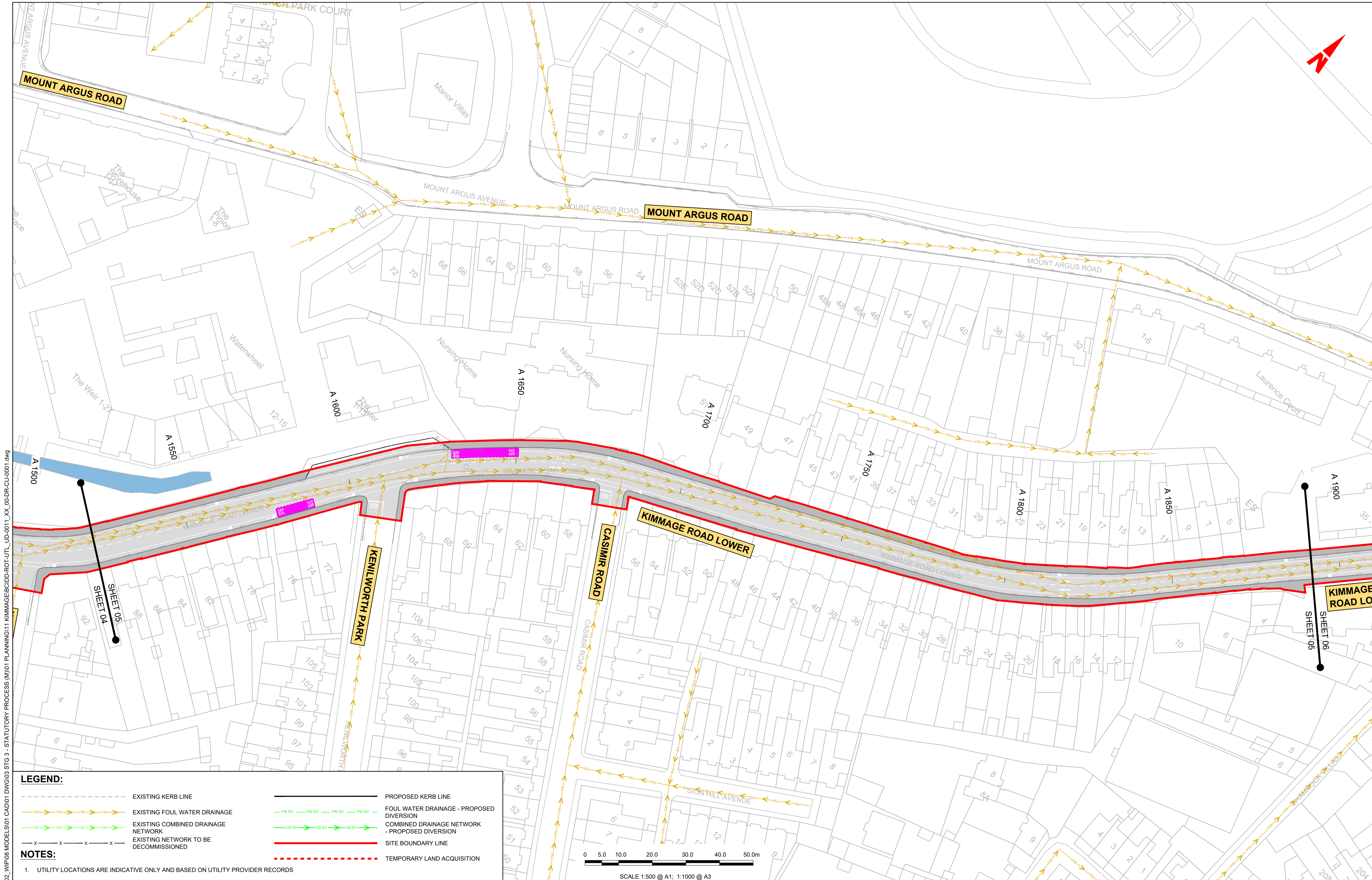
Date: FEB 2023
Scale: 1:500 @ A1
1:1000 @ A3

Programme Code: BCIDD
Originator Code: ROT

Drawn: DS
Checked: EE
Approved: SMG

Programme Title: BUSCONNECTS DUBLIN CORE BUS CORRIDORS INFRASTRUCTURE WORKS			
Drawing Title: KIMMAGE TO CITY CENTRE CORE BUS CORRIDOR SCHEME IW FOUL SEWER ASSET ALTERATIONS			
Drawing File Name: BCIDD-ROT-UTL_UD-0011_XX_00-DR-CU-0004	Sheet Number: 04 of 14	Status: A	Rev: M01

DO NOT SCALE USE FIGURED DIMENSIONS ONLY



LEGEND:

	EXISTING KERB LINE		PROPOSED KERB LINE
	EXISTING FOUL WATER DRAINAGE		FOUL WATER DRAINAGE - PROPOSED DIVERSION
	EXISTING COMBINED DRAINAGE NETWORK		COMBINED DRAINAGE NETWORK - PROPOSED DIVERSION
	EXISTING NETWORK TO BE DECOMMISSIONED		SITE BOUNDARY LINE
			TEMPORARY LAND ACQUISITION

NOTES:

- UTILITY LOCATIONS ARE INDICATIVE ONLY AND BASED ON UTILITY PROVIDER RECORDS

W:\000000\1917117-02_WIP\08 MODELS\01 CAD\01 DWG\03 STG 3 - STATUTORY PROCESS (M)\01 PLANNING\11 KIMMAGE\BCIDD-ROT-UTL_UD-0011_XX_00-DR-CU-0001.dwg
 19/02/2023 11:17:02

Disclaimer

a. © National Transport Authority (NTA) 2022. This drawing is confidential and the copyright in it is owned by NTA. This drawing must not be either loaned, copied or otherwise reproduced in whole or in part or used for any purpose without the prior permission of NTA.

b. This drawing is to be used for the design element identified in the titleblock. Other information shown is to be considered indicative only. The drawing is to be read in conjunction with all other relevant design drawings.

c. O.S. data used for plans are printed under © Ordnance Survey Ireland Government of Ireland. All rights reserved. Licence Number 2022/OSI_NMA_180 National Transport Authority. All elevations are in metres and relate to OSI Geoid Model (OSGM15) Mean Head. All Co-ordinates are in Irish Transverse Mercator Grid (ITM) as defined by OSI active local GPS station.

d. Information concerning the position of apparatus shown on this drawing is based on drawings supplied by the utility owners and/or the utility works contractor, whilst every care has been taken in the preparation of this drawing, positions should be taken as approximate and are intended for general guidance only and no representation is made by the NTA as to the accuracy, completeness, sufficiency or otherwise of this drawing and the position of the apparatus. The information contained herein does not purport to be comprehensive or final as the apparatus is subject to being altered and/or superceded. Recipients should not rely on this information. Any liabilities are hereby expressly disclaimed.

e. The information contained herein has been provided by the NTA but does not purport to be comprehensive or final. Recipients should not rely on the information. Neither the NTA nor any of its directors, officers, employees, agents, stakeholders or advisers make any representation or warranty as to, or accept any liability or responsibility in relation to, the adequacy, accuracy, reasonableness or completeness of the information provided as part of this document or any matter on which the information is based (including but not limited to loss or damage arising as a result of reliance by recipients on the information or any part of it). Any liabilities are hereby expressly disclaimed.



Rev	Date	Drm	Chk'd	App'd	Description
M01	FEB 2023	DS	LS	SMG	ISSUED FOR PHASE 4: PLANNING

Client

Engineering Designer

Programme Title

BUSCONNECTS DUBLIN
CORE BUS CORRIDORS INFRASTRUCTURE WORKS

Drawing Title

KIMMAGE TO CITY CENTRE CORE BUS CORRIDOR SCHEME
 IW FOUL SEWER ASSET ALTERATIONS

Drawing File Name

BCIDD-ROT-UTL_UD-0011_XX_00-DR-CU-0005

Sheet Number

05 of 14

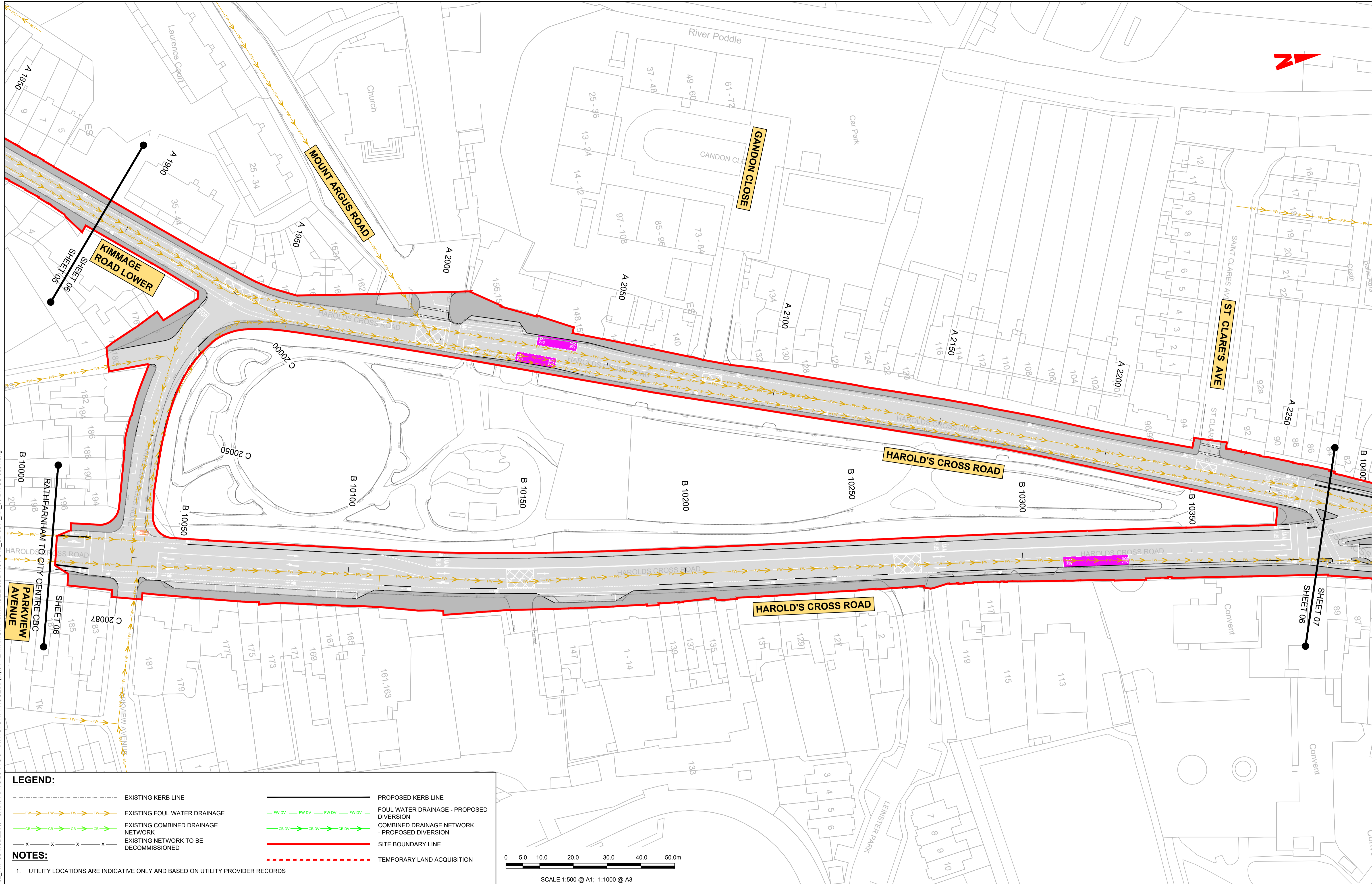
Status

A

Rev

M01

DO NOT SCALE USE FIGURED DIMENSIONS ONLY

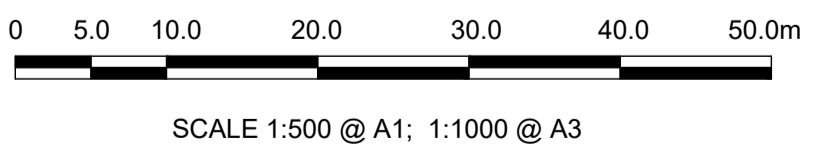


LEGEND:

- EXISTING KERB LINE
- PROPOSED KERB LINE
- EXISTING FOUL WATER DRAINAGE
- FOUL WATER DRAINAGE - PROPOSED DIVERSION
- EXISTING COMBINED DRAINAGE NETWORK
- COMBINED DRAINAGE NETWORK - PROPOSED DIVERSION
- EXISTING NETWORK TO BE DECOMMISSIONED
- SITE BOUNDARY LINE
- TEMPORARY LAND ACQUISITION

NOTES:

- UTILITY LOCATIONS ARE INDICATIVE ONLY AND BASED ON UTILITY PROVIDER RECORDS



Disclaimer

a. © National Transport Authority (NTA) 2022. This drawing is confidential and the copyright in it is owned by NTA. This drawing must not be either loaned, copied or otherwise reproduced in whole or in part or used for any purpose without the prior permission of NTA.

b. This drawing is to be used for the design element identified in the titlebox. Other information shown is to be considered indicative only. The drawing is to be read in conjunction with all other relevant design drawings.

c. O.S. data used for plans are printed under © Ordnance Survey Ireland Government of Ireland. All rights reserved. Licence Number 2022/OSI_NMA_180 National Transport Authority. All elevations are in metres and relate to OSI Geoid Model (OSGM15) Mean Head. All Co-ordinates are in Irish Transverse Mercator Grid (ITM) as defined by OSI active local GPS station.

d. Information concerning the position of apparatus shown on this drawing is based on drawings supplied by the utility owners and/or the utility works contractor, whilst every care has been taken in the preparation of this drawing, positions should be taken as approximate and are intended for general guidance only and no representation is made by the NTA as to the accuracy, completeness, sufficiency or otherwise of this drawing and the position of the apparatus. The information contained herein does not purport to be comprehensive or final as the apparatus is subject to being altered and/or superseded. Recipients should not rely on this information. Any liabilities are hereby expressly disclaimed.

e. The information contained herein has been provided by the NTA but does not purport to be comprehensive or final. Recipients should not rely on the information. Neither the NTA nor any of its directors, officers, employees, agents, stakeholders or advisers make any representation or warranty as to, or accept any liability or responsibility in relation to, the adequacy, accuracy, reasonableness or completeness of the information provided as part of this document or any matter on which the information is based (including but not limited to loss or damage arising as a result of reliance by recipients on the information or any part of it). Any liabilities are hereby expressly disclaimed.



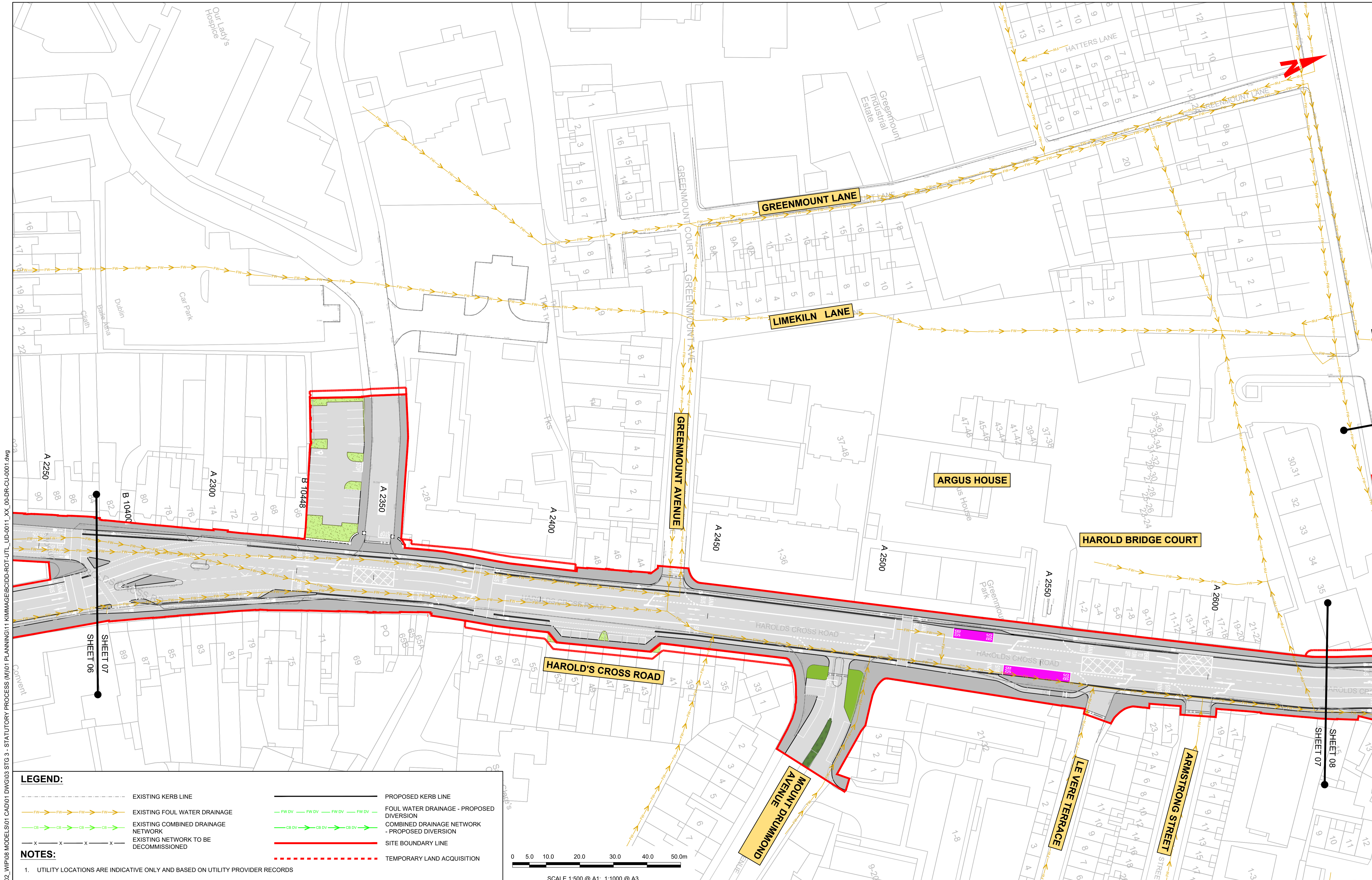
Rev	Date	Drm	Chk'd	App'd	Description
M01	FEB 2023	DS	LS	SMG	ISSUED FOR PHASE 4: PLANNING

Client NTA Údarás Náisiúnta Iompair National Transport Authority		Engineering Designer CIROD TYPSA		
Date FEB 2023	Scale 1:500 @ A1 1:1000 @ A3	Drawn DS	Checked EE	Approved SMG
Programme Code BCIDD	Originator Code ROT	QMS Code		

Programme Title BUSCONNECTS DUBLIN CORE BUS CORRIDORS INFRASTRUCTURE WORKS			
Drawing Title KIMMAGE TO CITY CENTRE CORE BUS CORRIDOR SCHEME IW FOUL SEWER ASSET ALTERATIONS			
Drawing File Name BCIDD-ROT-UTL_UD-0011_XX_00-DR-CU-0006	Sheet Number 06 of 14	Status A	Rev M01

DO NOT SCALE USE FIGURED DIMENSIONS ONLY

\\nodub\p\j\2019\1917\171117-02_WIP\08_MODELS\01_CAD\01_PLANNING\11_KIMMAGE\BCIDD-ROT-UTL_UD-0011_XX_00-DR-CU-0001.dwg

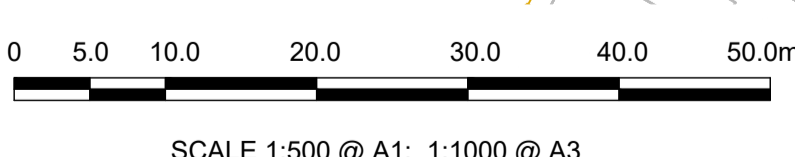


LEGEND:

	EXISTING KERB LINE		PROPOSED KERB LINE
	EXISTING FOUL WATER DRAINAGE		FOUL WATER DRAINAGE - PROPOSED DIVERSION
	EXISTING COMBINED DRAINAGE NETWORK		COMBINED DRAINAGE NETWORK - PROPOSED DIVERSION
	EXISTING NETWORK TO BE DECOMMISSIONED		SITE BOUNDARY LINE
			TEMPORARY LAND ACQUISITION

NOTES:

- UTILITY LOCATIONS ARE INDICATIVE ONLY AND BASED ON UTILITY PROVIDER RECORDS



Disclaimer

a. © National Transport Authority (NTA) 2022. This drawing is confidential and the copyright in it is owned by NTA. This drawing must not be either loaned, copied or otherwise reproduced in whole or in part or used for any purpose without the prior permission of NTA.

b. This drawing is to be used for the design element identified in the titlebox. Other information shown is to be considered indicative only. The drawing is to be read in conjunction with all other relevant design drawings.

c. O.S. data used for plans are printed under © Ordnance Survey Ireland Government of Ireland. All rights reserved. Licence Number 2022/OSI_NMA_180 National Transport Authority. All elevations are in metres and relate to OSI Geoid Model (OSGM15) Mean Head. All Co-ordinates are in Irish Transverse Mercator Grid (ITM) as defined by OSI active local GPS station.

d. Information concerning the position of apparatus shown on this drawing is based on drawings supplied by the utility owners and/or the utility works contractor, whilst every care has been taken in the preparation of this drawing, positions should be taken as approximate and are intended for general guidance only and no representation is made by the NTA as to the accuracy, completeness, sufficiency or otherwise of this drawing and the position of the apparatus. The information contained herein does not purport to be comprehensive or final as the apparatus is subject to being altered and/or superceded. Recipients should not rely on this information. Any liabilities are hereby expressly disclaimed.

e. The information contained herein has been provided by the NTA but does not purport to be comprehensive or final. Recipients should not rely on the information. Neither the NTA nor any of its directors, officers, employees, agents, stakeholders or advisers make any representation or warranty as to, or accept any liability or responsibility in relation to, the adequacy, accuracy, reasonableness or completeness of the information provided as part of this document or any matter on which the information is based (including but not limited to loss or damage arising as a result of reliance by recipients on the information or any part of it). Any liabilities are hereby expressly disclaimed.



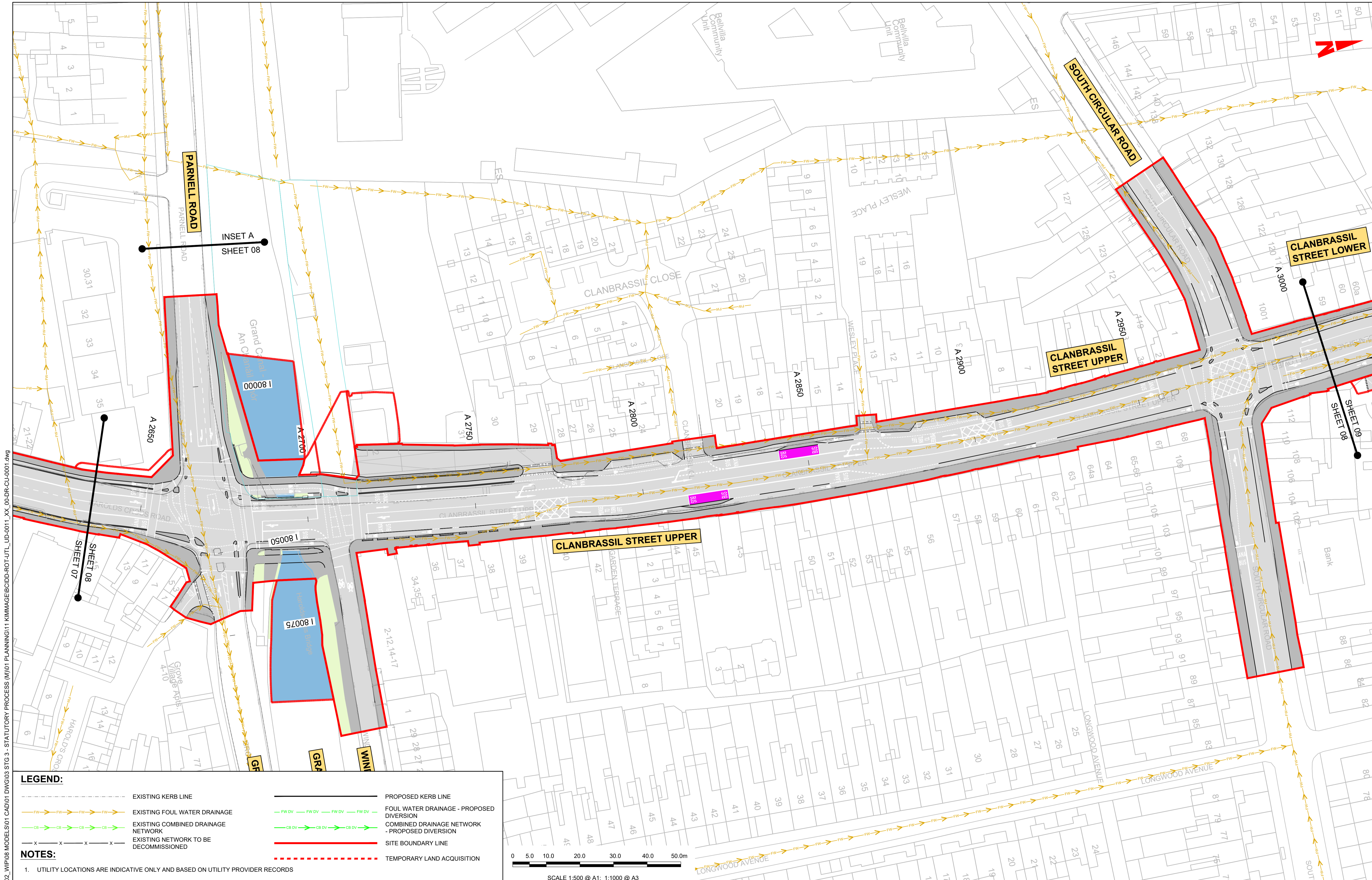
Rev	Date	Drm	Chk'd	App'd	Description
M01	FEB 2023	DS	LS	SMG	ISSUED FOR PHASE 4: PLANNING

Client NTA Udarás Náisiúnta Iompair National Transport Authority		Engineering Designer CIROD TYPSA		
Date FEB 2023	Scale 1:500 @ A1 1:1000 @ A3	Drawn DS	Checked EE	Approved SMG
Programme Code BCIDD	Originator Code ROT	QMS Code		

Programme Title BUSCONNECTS DUBLIN CORE BUS CORRIDORS INFRASTRUCTURE WORKS				
Drawing Title KIMMAGE TO CITY CENTRE CORE BUS CORRIDOR SCHEME IW FOUL SEWER ASSET ALTERATIONS				
Drawing File Name BCIDD-ROT-UTL_UD-0011_XX_00-DR-CU-0007	Sheet Number 07 of 14	Status A	Rev M01	

DO NOT SCALE USE FIGURED DIMENSIONS ONLY

\\woodjublu20191917171171-02_WIP08 MODELS01 CAD01 DWG03 STG 3 - STATUTORY PROCESS (M)01 PLANNING11 KIMMAGEBCIDD-ROT-UTL_UD-0011_XX_00-DR-CU-0001.dwg



LEGEND:

- EXISTING KERB LINE
- PROPOSED KERB LINE
- EXISTING FOUL WATER DRAINAGE
- FOUL WATER DRAINAGE - PROPOSED DIVERSION
- EXISTING COMBINED DRAINAGE NETWORK
- COMBINED DRAINAGE NETWORK - PROPOSED DIVERSION
- EXISTING NETWORK TO BE DECOMMISSIONED
- SITE BOUNDARY LINE
- TEMPORARY LAND ACQUISITION

NOTES:

- UTILITY LOCATIONS ARE INDICATIVE ONLY AND BASED ON UTILITY PROVIDER RECORDS

Disclaimer:

a. © National Transport Authority (NTA) 2022. This drawing is confidential and the copyright in it is owned by NTA. This drawing must not be either loaned, copied or otherwise reproduced in whole or in part or used for any purpose without the prior permission of NTA.

b. This drawing is to be used for the design element identified in the titleblock. Other information shown is to be considered indicative only. The drawing is to be read in conjunction with all other relevant design drawings.

c. O.S. data used for plans are printed under © Ordnance Survey Ireland Government of Ireland. All rights reserved. Licence Number 2022/OSI_NMA_180 National Transport Authority. All elevations are in metres and relate to OSI Geoid Model (OSGM15) Mean Head. All Co-ordinates are in Irish Transverse Mercator Grid (ITM) as defined by OSI active local GPS station.

d. Information concerning the position of apparatus shown on this drawing is based on drawings supplied by the utility owners and/or the utility works contractor, whilst every care has been taken as appropriate and are intended for general guidance only and no representation is made by the NTA as to the accuracy, completeness, sufficiency or otherwise of this information. The drawing is subject to being altered and/or superseded. Recipients should not rely on this information. Any liabilities are hereby expressly disclaimed.

e. The information contained herein has been provided by the NTA but does not purport to be comprehensive or final. Recipients should not rely on the information. Neither the NTA nor any of its directors, officers, employees, agents, stakeholders or advisers make any representation or warranty as to, or accept any liability or responsibility in relation to, the adequacy, accuracy, reasonableness or completeness of the information provided as part of this document or any matter on which the information is based (including but not limited to loss or damage arising as a result of reliance by recipients on the information or any part of it). Any liabilities are hereby expressly disclaimed.



Rev	Date	Drm	Chk'd	App'd	Description
M01	FEB 2023	DS	LS	SMG	ISSUED FOR PHASE 4: PLANNING

Client: **NTA**
Udarás Náisiúnta Iompair
National Transport Authority

Engineering Designer: **CIROD**
TYPSA

Date: FEB 2023
Scale: 1:500 @ A1
1:1000 @ A3

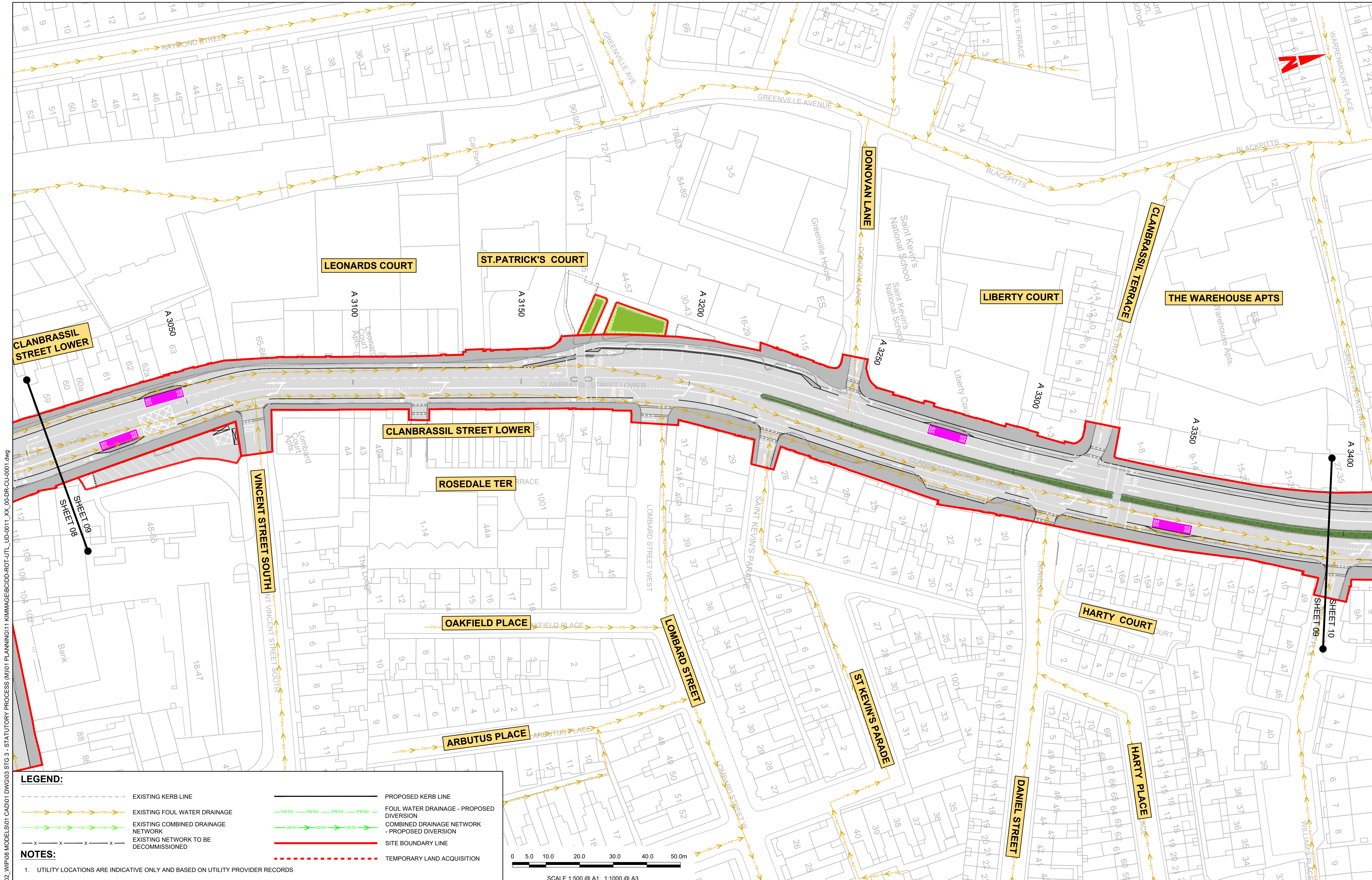
Programme Code: BCIDD
Originator Code: ROT

Drawn: DS
Checked: EE
Approved: SMG

Programme Title: BUSCONNECTS DUBLIN CORE BUS CORRIDORS INFRASTRUCTURE WORKS			
Drawing Title: KIMMAGE TO CITY CENTRE CORE BUS CORRIDOR SCHEME IW FOUL SEWER ASSET ALTERATIONS			
Drawing File Name: BCIDD-ROT-UTL_UD-0011_XX_00-DR-CU-0008	Sheet Number: 08 of 14	Status: A	Rev: M01

DO NOT SCALE USE FIGURED DIMENSIONS ONLY

\\produbp1\j2019\191171917-02_WIP\08 MODELS\01 CAD\01 PLANNING\11 KIMMAGE\BCIDD-ROT-UTL_UD-0011_XX_00-DR-CU-0001.dwg



LEGEND:

- EXISTING KERB LINE
- PROPOSED KERB LINE
- FW EXISTING FOUL WATER DRAINAGE
- FW DV FOUL WATER DRAINAGE - PROPOSED DIVERSION
- CB EXISTING COMBINED DRAINAGE NETWORK
- CB DV COMBINED DRAINAGE NETWORK - PROPOSED DIVERSION
- X EXISTING NETWORK TO BE DECOMMISSIONED
- SITE BOUNDARY LINE
- TEMPORARY LAND ACQUISITION

NOTES:

- UTILITY LOCATIONS ARE INDICATIVE ONLY AND BASED ON UTILITY PROVIDER RECORDS



Disclaimer:

a. © National Transport Authority (NTA) 2022. This drawing is confidential and the copyright in it is owned by NTA. This drawing must not be either loaned, copied or otherwise reproduced in whole or in part or used for any purpose without the prior permission of NTA.

b. This drawing is to be used for the design element identified in the titleblock. Other information shown is to be considered indicative only. The drawing is to be read in conjunction with all other relevant design drawings.

c. O.S. data used for plans are printed under © Ordnance Survey Ireland Government of Ireland. All rights reserved. Licence Number 2022/OSI_NMA_180 National Transport Authority. All elevations are in metres and relate to OSI Geoid Model (OSGM15) Mean Head. All Co-ordinates are in Irish Transverse Mercator Grid (ITM) as defined by OSI active local GPS station.

d. Information concerning the position of apparatus shown on this drawing is based on drawings supplied by the utility owners and/or the utility works contractor, whilst every care has been taken in the preparation of this drawing, positions should be taken as approximate and are intended for general guidance only and no representation is made by the NTA as to the accuracy, completeness, sufficiency or otherwise of this drawing and the position of the apparatus. The information contained herein does not purport to be comprehensive or final as the apparatus is subject to being altered and/or superseded. Recipients should not rely on this information. Any liabilities are hereby expressly disclaimed.

e. The information contained herein has been provided by the NTA but does not purport to be comprehensive or final. Recipients should not rely on the information. Neither the NTA nor any of its directors, officers, employees, agents, stakeholders or advisers make any representation or warranty as to, or accept any liability or responsibility in relation to, the adequacy, accuracy, reasonableness or completeness of the information provided as part of this document or any matter on which the information is based (including but not limited to loss or damage arising as a result of reliance by recipients on the information or any part of it). Any liabilities are hereby expressly disclaimed.



Rev	Date	Drm	Chk'd	App'd	Description
M01	FEB 2023	DS	LS	SMG	ISSUED FOR PHASE 4: PLANNING

Client: **NTA**
Udárás Náisiúnta Iompair
National Transport Authority

Engineering Designer: **CIROD**
TYPSA

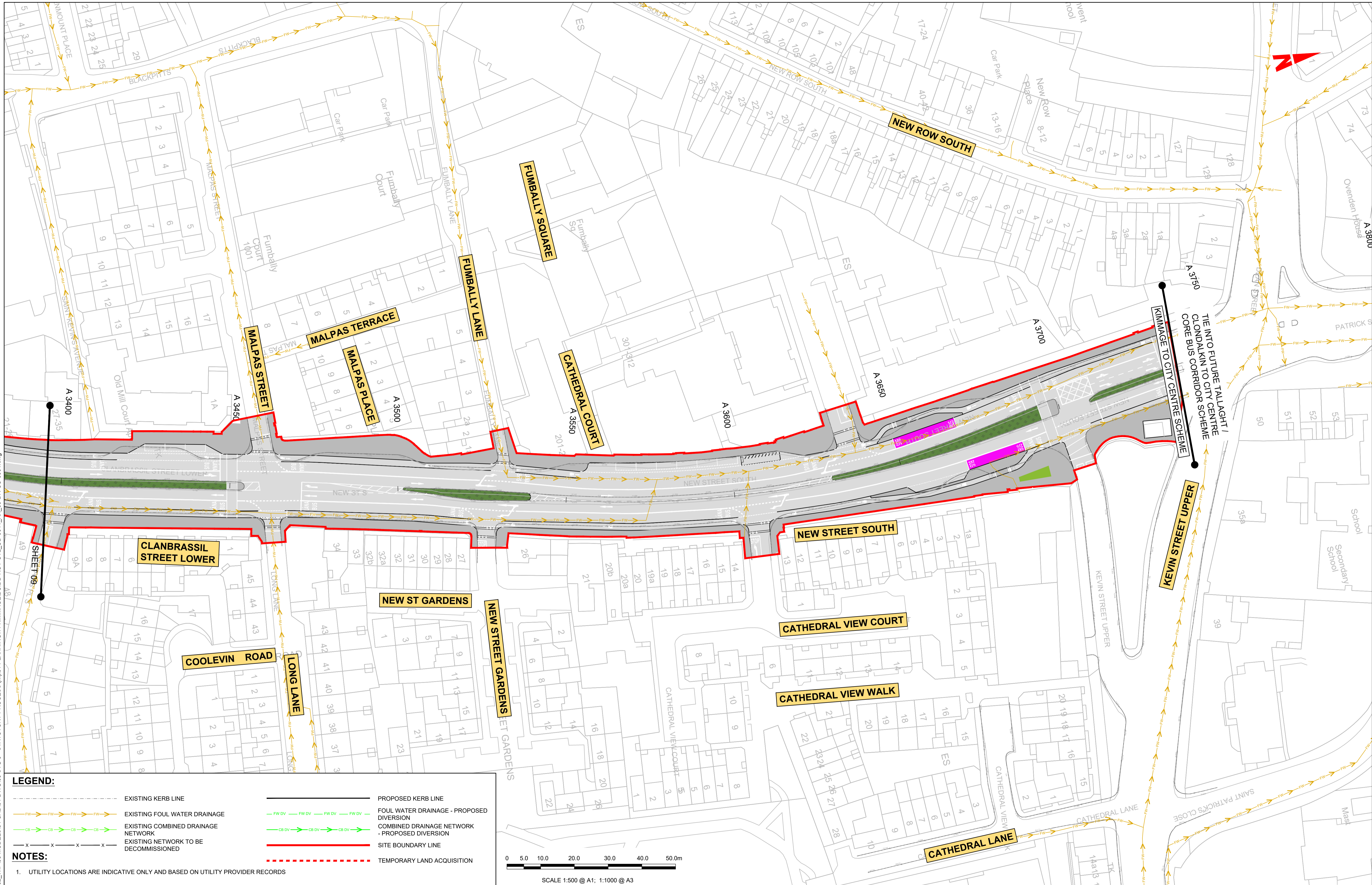
Date: FEB 2023
Scale: 1:500 @ A1
1:1000 @ A3

Drawn: DS
Checked: EE
Approved: SMG

Programme Code: BCIDD
Originator Code: ROT
QMS Code:

Programme Title: BUSCONNECTS DUBLIN CORE BUS CORRIDORS INFRASTRUCTURE WORKS			
Drawing Title: KIMMAGE TO CITY CENTRE CORE BUS CORRIDOR SCHEME IW FOUL SEWER ASSET ALTERATIONS			
Drawing File Name: BCIDD-ROT-UTL_UD-0011_XX_00-DR-CU-0009	Sheet Number: 09 of 14	Status: A	Rev: M01

DO NOT SCALE USE FIGURED DIMENSIONS ONLY

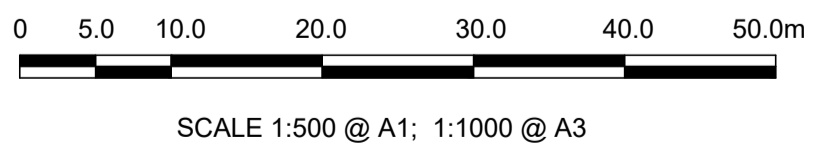


LEGEND:

	EXISTING KERB LINE		PROPOSED KERB LINE
	EXISTING FOUL WATER DRAINAGE		FOUL WATER DRAINAGE - PROPOSED DIVERSION
	EXISTING COMBINED DRAINAGE NETWORK		COMBINED DRAINAGE NETWORK - PROPOSED DIVERSION
	EXISTING NETWORK TO BE DECOMMISSIONED		SITE BOUNDARY LINE
			TEMPORARY LAND ACQUISITION

NOTES:

- UTILITY LOCATIONS ARE INDICATIVE ONLY AND BASED ON UTILITY PROVIDER RECORDS



Disclaimer:

a. © National Transport Authority (NTA) 2022. This drawing is confidential and the copyright in it is owned by NTA. This drawing must not be either loaned, copied or otherwise reproduced in whole or in part or used for any purpose without the prior permission of NTA.

b. This drawing is to be used for the design element identified in the titleblock. Other information shown is to be considered indicative only. The drawing is to be read in conjunction with all other relevant design drawings.

c. D.S. data used for plans are printed under © Ordnance Survey Ireland Government of Ireland. All rights reserved. Licence Number 2022/OSI_NMA_180 National Transport Authority. All elevations are in metres and relate to OSI Geoid Model (OSGM15) Mean Head. All Co-ordinates are in Irish Transverse Mercator Grid (ITM) as defined by OSI active local GPS station.

d. Information concerning the position of apparatus shown on this drawing is based on drawings supplied by the utility owners and/or the utility works contractor, whilst every care has been taken in the preparation of this drawing, positions should be taken as approximate and are intended for general guidance only and no representation is made by the NTA as to the accuracy, completeness, sufficiency or otherwise of this drawing and the position of the apparatus. The information contained herein does not purport to be comprehensive or final as the apparatus is subject to being altered and/or superseded. Recipients should not rely on this information. Any liabilities are hereby expressly disclaimed.

e. The information contained herein has been provided by the NTA but does not purport to be comprehensive or final. Recipients should not rely on the information. Neither the NTA nor any of its directors, officers, employees, agents, stakeholders or advisers make any representation or warranty as to, or accept any liability or responsibility in relation to, the adequacy, accuracy, reasonableness or completeness of the information provided as part of this document or any matter on which the information is based (including but not limited to loss or damage arising as a result of reliance by recipients on the information or any part of it). Any liabilities are hereby expressly disclaimed.



Rev	Date	Drm	Chk'd	App'd	Description
M01	FEB 2023	DS	LS	SMG	ISSUED FOR PHASE 4: PLANNING

 Údarás Náisiúnta Iompair National Transport Authority		Engineering Designer TYPISA		
Date	Scale	Drawn	Checked	Approved
FEB 2023	1:500 @ A1 1:1000 @ A3	DS	EE	SMG
Programme Code	Originator Code	QMS Code		
BCIDD	ROT			

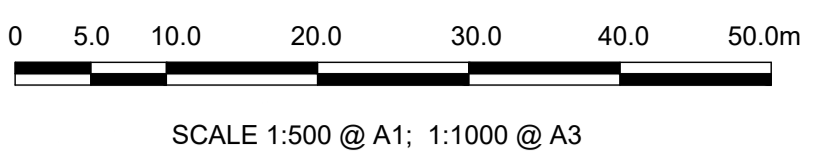
Programme Title BUSCONNECTS DUBLIN CORE BUS CORRIDORS INFRASTRUCTURE WORKS	
Drawing Title KIMMAGE TO CITY CENTRE CORE BUS CORRIDOR SCHEME IW FOUL SEWER ASSET ALTERATIONS	
Drawing File Name BCIDD-ROT-UTL_UD-0011_XX_00-DR-CU-0010	Sheet Number 10 of 14
Status A	Rev M01

DO NOT SCALE USE FIGURED DIMENSIONS ONLY

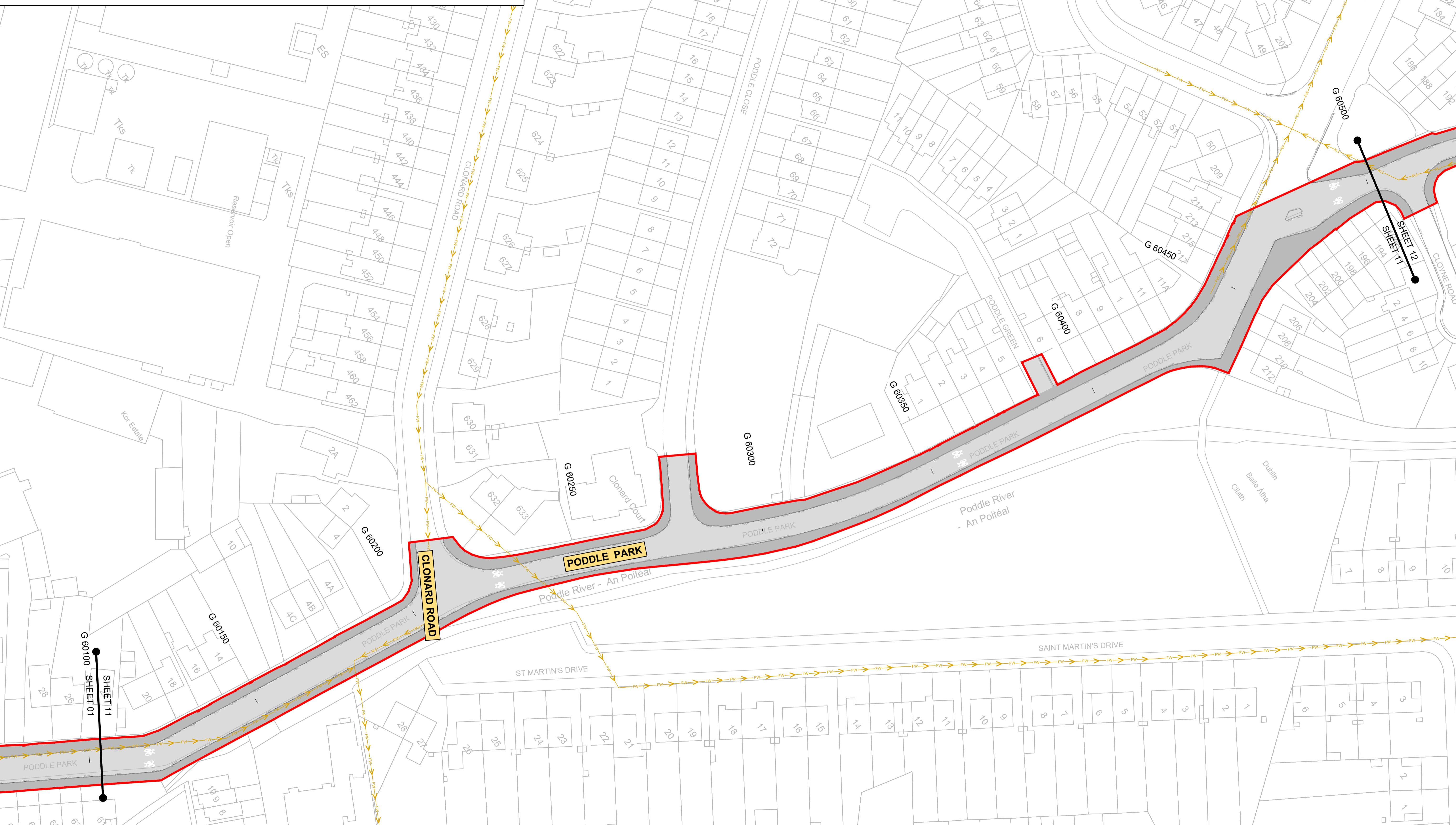
\\nodubp1\1\2019\1911719117-02_WIP\08_MODELS\01_CAD\01_PLANNING\11_KIMMAGE\BCIDD-ROT-UTL_UD-0011_XX_00-DR-CU-0010.dwg

LEGEND:

	EXISTING KERB LINE		PROPOSED KERB LINE
	EXISTING FOUL WATER DRAINAGE		FOUL WATER DRAINAGE - PROPOSED DIVERSION
	EXISTING COMBINED DRAINAGE NETWORK		COMBINED DRAINAGE NETWORK - PROPOSED DIVERSION
	EXISTING NETWORK TO BE DECOMMISSIONED		SITE BOUNDARY LINE
NOTES:			TEMPORARY LAND ACQUISITION



1. UTILITY LOCATIONS ARE INDICATIVE ONLY AND BASED ON UTILITY PROVIDER RECORDS



Disclaimer

a. © National Transport Authority (NTA) 2022. This drawing is confidential and the copyright in it is owned by NTA. This drawing must not be either loaned, copied or otherwise reproduced in whole or in part or used for any purpose without the prior permission of NTA.

b. This drawing is to be used for the design element identified in the titlebox. Other information shown is to be considered indicative only. The drawing is to be read in conjunction with all other relevant design drawings.

c. O.S. data used for plans are printed under © Ordnance Survey Ireland Government of Ireland. All rights reserved. Licence Number 2022/OSI_NMA_180 National Transport Authority. All elevations are in metres and relate to OSI Geoid Model (OSGM15) Mean Head. All Co-ordinates are in Irish Transverse Mercator Grid (ITM) as defined by OSI active local GPS station.

d. Information concerning the position of apparatus shown on this drawing is based on drawings supplied by the utility owners and/or the utility works contractor, whilst every care has been taken in the preparation of this drawing, positions should be taken as approximate and are intended for general guidance only and no representation is made by the NTA as to the accuracy, completeness, sufficiency or otherwise of this drawing and the position of the apparatus. The information contained herein does not purport to be comprehensive or final as the apparatus is subject to being altered and/or superceded. Recipients should not rely on this information. Any liabilities are hereby expressly disclaimed.

e. The information contained herein has been provided by the NTA but does not purport to be comprehensive or final. Recipients should not rely on the information. Neither the NTA nor any of its directors, officers, employees, agents, stakeholders or advisers make any representation or warranty as to, or accept any liability or responsibility in relation to, the adequacy, accuracy, reasonableness or completeness of the information provided as part of this document or any matter on which the information is based (including but not limited to loss or damage arising as a result of reliance by recipients on the information or any part of it). Any liabilities are hereby expressly disclaimed.



Rev	Date	Drn	Chk'd	App'd	Description
M01	FEB 2023	DS	LS	SMG	ISSUED FOR PHASE 4: PLANNING

 Údarás Náisiúnta Iompair National Transport Authority		Engineering Designer I-Rod TYPSA		
Date	Scale	Drawn	Checked	Approved
FEB 2023	1:500 @ A1 1:1000 @ A3	DS	EE	SMG
Programme Code	Originator Code	QMS Code		
BCIDD	ROT			

Programme Title BUSCONNECTS DUBLIN CORE BUS CORRIDORS INFRASTRUCTURE WORKS			
Drawing Title KIMMAGE TO CITY CENTRE CORE BUS CORRIDOR SCHEME IW FOUL SEWER ASSET ALTERATIONS			
Drawing File Name	Sheet Number	Status	Rev
BCIDD-ROT-UTL_UD-0011_XX_00-DR-CU-0011	11 of 14	A	M01

DO NOT SCALE USE FIGURED DIMENSIONS ONLY

\\nodub\p1\j2019\1917119117-02_WIP\08 MODELS\01 CAD\01 DWG\03 STG 3 - STATUTORY PROCESS (M)\01 PLANNING\11 KIMMAGE\BCIDD-ROT-UTL_UD-0011_XX_00-DR-CU-0001.dwg

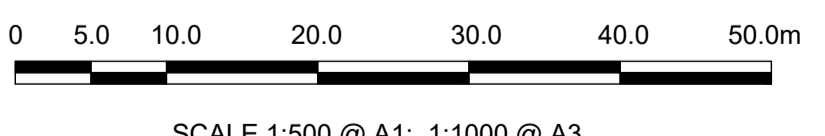


LEGEND:

	EXISTING KERB LINE		PROPOSED KERB LINE
	EXISTING FOUL WATER DRAINAGE		FOUL WATER DRAINAGE - PROPOSED DIVERSION
	EXISTING COMBINED DRAINAGE NETWORK		COMBINED DRAINAGE NETWORK - PROPOSED DIVERSION
	EXISTING NETWORK TO BE DECOMMISSIONED		SITE BOUNDARY LINE
			TEMPORARY LAND ACQUISITION

NOTES:

- UTILITY LOCATIONS ARE INDICATIVE ONLY AND BASED ON UTILITY PROVIDER RECORDS



Disclaimer:

a. © National Transport Authority (NTA) 2022. This drawing is confidential and the copyright in it is owned by NTA. This drawing must not be either loaned, copied or otherwise reproduced in whole or in part or used for any purpose without the prior permission of NTA.

b. This drawing is to be used for the design element identified in the titleblock. Other information shown is to be considered indicative only. The drawing is to be read in conjunction with all other relevant design drawings.

c. O.S. data used for plans are printed under © Ordnance Survey Ireland Government of Ireland. All rights reserved. Licence Number 2022/OSI_NMA_180 National Transport Authority. All elevations are in metres and relate to OSI Geoid Model (OSGM15) Mean Head. All Co-ordinates are in Irish Transverse Mercator Grid (ITM) as defined by OSI active local GPS station.

d. Information concerning the position of apparatus shown on this drawing is based on drawings supplied by the utility owners and/or the utility works contractor, whilst every care has been taken in the preparation of this drawing, positions should be taken as approximate and are intended for general guidance only and no representation is made by the NTA as to the accuracy, completeness, sufficiency or otherwise of this drawing and the position of the apparatus. The information contained herein does not purport to be comprehensive or final as the apparatus is subject to being altered and/or superceded. Recipients should not rely on this information. Any liabilities are hereby expressly disclaimed.

e. The information contained herein has been provided by the NTA but does not purport to be comprehensive or final. Recipients should not rely on the information. Neither the NTA nor any of its directors, officers, employees, agents, stakeholders or advisers make any representation or warranty as to, or accept any liability or responsibility in relation to, the adequacy, accuracy, reasonableness or completeness of the information provided as part of this document or any matter on which the information is based (including but not limited to loss or damage arising as a result of reliance by recipients on the information or any part of it). Any liabilities are hereby expressly disclaimed.

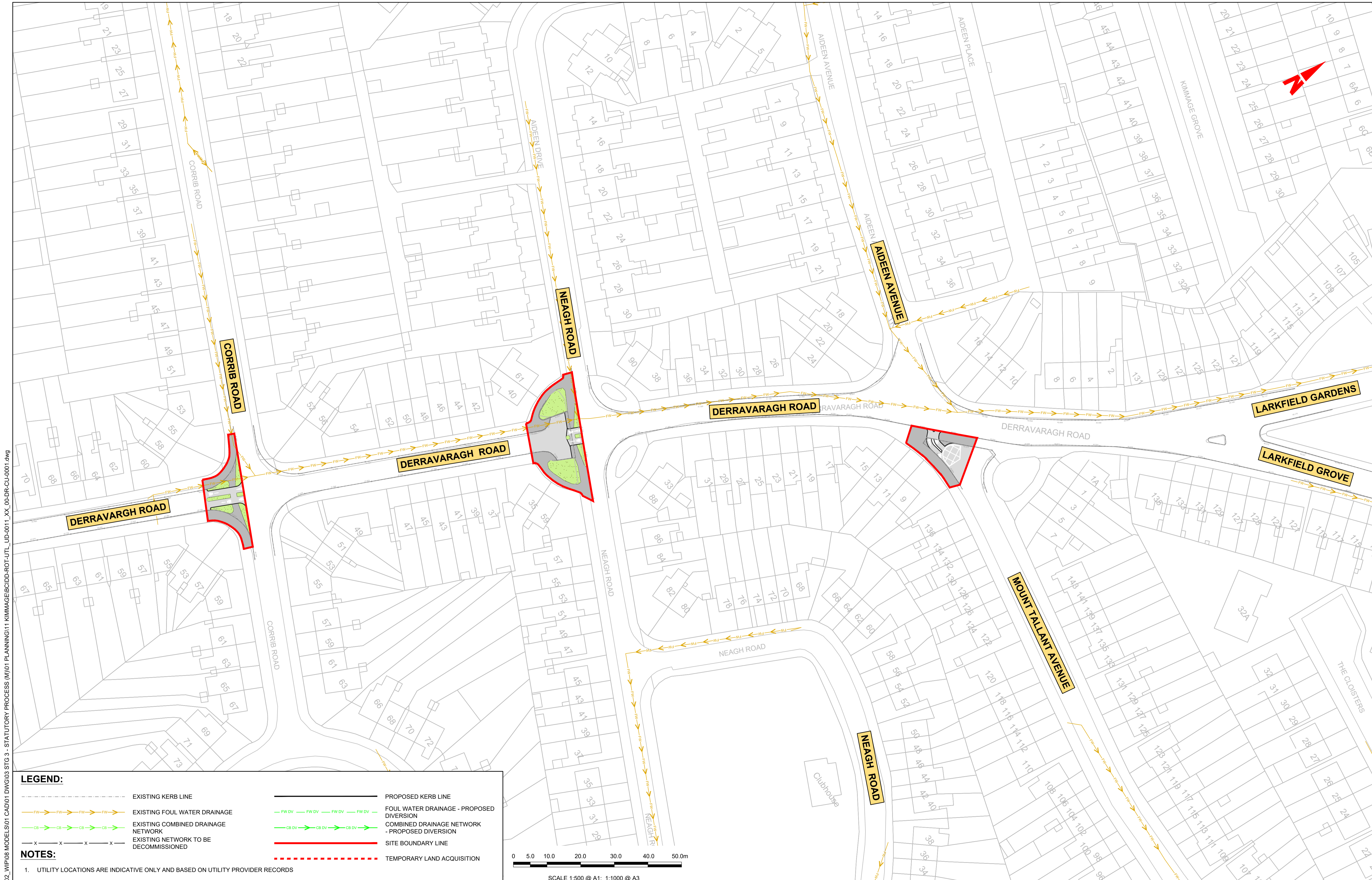
Rev	Date	Drm	Chk'd	App'd	Description
M01	FEB 2023	DS	LS	SMG	ISSUED FOR PHASE 4: PLANNING

 Údarás Náisiúnta Iompair National Transport Authority		Engineering Designer IROD TYPSA		
Date	Scale	Drawn	Checked	Approved
FEB 2023	1:500 @ A1 1:1000 @ A3	DS	EE	SMG
Programme Code	Originator Code	QMS Code		
BCIDD	ROT			

Programme Title BUSCONNECTS DUBLIN CORE BUS CORRIDORS INFRASTRUCTURE WORKS			
Drawing Title KIMMAGE TO CITY CENTRE CORE BUS CORRIDOR SCHEME IW FOUL SEWER ASSET ALTERATIONS			
Drawing File Name	Sheet Number	Status	Rev
BCIDD-ROT-UTL_UD-0011_XX_00-DR-CU-0012	12 of 14	A	M01

DO NOT SCALE USE FIGURED DIMENSIONS ONLY

W:\dubp\p\2019\1917\1917-02_WIP\08 MODELS\01 CAD\01 PLANNING\11 KIMMAGE\BCIDD-ROT-UTL_UD-0011_XX_00-DR-CU-0001.dwg

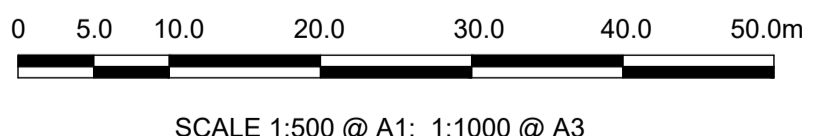


LEGEND:

- EXISTING KERB LINE
- PROPOSED KERB LINE
- EXISTING FOUL WATER DRAINAGE
- FOUL WATER DRAINAGE - PROPOSED DIVERSION
- EXISTING COMBINED DRAINAGE NETWORK
- COMBINED DRAINAGE NETWORK - PROPOSED DIVERSION
- EXISTING NETWORK TO BE DECOMMISSIONED
- SITE BOUNDARY LINE
- TEMPORARY LAND ACQUISITION

NOTES:

- UTILITY LOCATIONS ARE INDICATIVE ONLY AND BASED ON UTILITY PROVIDER RECORDS



Disclaimer

a. © National Transport Authority (NTA) 2022. This drawing is confidential and the copyright in it is owned by NTA. This drawing must not be either loaned, copied or otherwise reproduced in whole or in part or used for any purpose without the prior permission of NTA.

b. This drawing is to be used for the design element identified in the titleblock. Other information shown is to be considered indicative only. The drawing is to be read in conjunction with all other relevant design drawings.

c. O.S. data used for plans are printed under © Ordnance Survey Ireland Government of Ireland. All rights reserved. Licence Number 2022/OSI_NMA_180 National Transport Authority. All elevations are in metres and relate to OSI Geoid Model (OSGM15) Mean Head. All Co-ordinates are in Irish Transverse Mercator Grid (ITM) as defined by OSI active local GPS station.

d. Information concerning the position of apparatus shown on this drawing is based on drawings supplied by the utility owners and/or the utility works contractor, whilst every care has been taken in the preparation of this drawing, positions should be taken as approximate and are intended for general guidance only and no representation is made by the NTA as to the accuracy, completeness, sufficiency or otherwise of this drawing and the position of the apparatus. The information contained herein does not purport to be comprehensive or final as the apparatus is subject to being altered and/or superceded. Recipients should not rely on this information. Any liabilities are hereby expressly disclaimed.

e. The information contained herein has been provided by the NTA but does not purport to be comprehensive or final. Recipients should not rely on the information. Neither the NTA nor any of its directors, officers, employees, agents, stakeholders or advisers make any representation or warranty as to, or accept any liability or responsibility in relation to, the adequacy, accuracy, reasonableness or completeness of the information provided as part of this document or any matter on which the information is based (including but not limited to loss or damage arising as a result of reliance by recipients on the information or any part of it). Any liabilities are hereby expressly disclaimed.



Rev	Date	Drn	Chk'd	App'd	Description
M01	FEB 2023	DS	LS	SMG	ISSUED FOR PHASE 4: PLANNING

Client: **NTA**
Udarás Náisiúnta Iompair
National Transport Authority

Engineering Designer: **CIROD**
TYPSA

Date: FEB 2023
Scale: 1:500 @ A1, 1:1000 @ A3
Programme Code: BCIDD
Originator Code: ROT

Drawn: DS
Checked: EE
Approved: SMG

Programme Title: **BUSCONNECTS DUBLIN**
CORE BUS CORRIDORS INFRASTRUCTURE WORKS

Drawing Title: KIMMAGE TO CITY CENTRE CORE BUS CORRIDOR SCHEME
IW FOUL SEWER ASSET ALTERATIONS

Drawing File Name: BCIDD-ROT-UTL_UD-0011_XX_00-DR-CU-0013
Sheet Number: 13 of 14
Status: A
Rev: M01

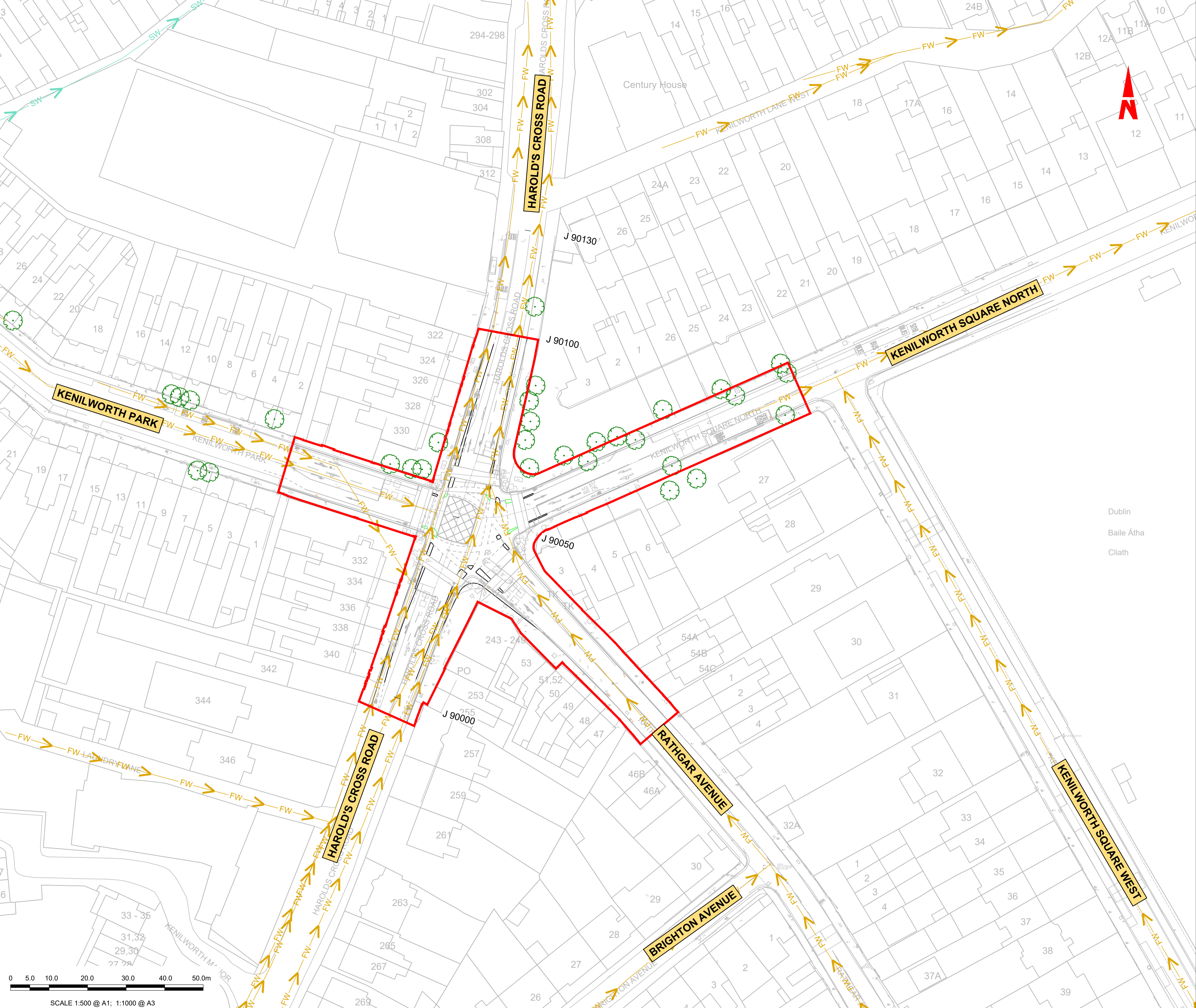
DO NOT SCALE USE FIGURED DIMENSIONS ONLY

\\wddubp1\j\2019\1917\117-02_WIP\08 MODELS\01 CAD\01 PLANNING\11 KIMMAGE\BCIDD-ROT-UTL_UD-0011_XX_00-DR-CU-0001.dwg

LEGEND:

- ADDITIONAL CATCHMENT AREA (EXISTING GRASSED AREA TO BE PAVED)
- EXISTING PAVED AREAS TO BECOME GRASSED
- EXISTING GRASSED AREAS TO BE MAINTAINED
- EXISTING FOUL NETWORK
- EXISTING COMBINED DRAINAGE NETWORK
- EXISTING SURFACE WATER NETWORK
- EXISTING OVERFLOW PIPE
- SURFACE WATER PIPE - UNDER CONSTRUCTION
- PROPOSED STORM WATER PIPE
- PROPOSED OVERSIZED PIPE
- PROPOSED FILTER DRAIN/PERFORATED PIPE
- PROPOSED PERMEABLE PAVING
- PROPOSED RODDING EYE
- PROPOSED MANHOLE
- PROPOSED INSPECTION CHAMBER
- EXISTING TREE
- EXISTING TREE TO BE REMOVED
- PROPOSED NEW TREE
- PROPOSED NEW TREE PIT
- PROPOSED SUDS I.E. SWALES, RAINGARDENS, FILTER DRAIN
- EXISTING GULLY
- SITE BOUNDARY LINE
- TEMPORARY LAND ACQUISITION

NOTE: PIPE SHAPE CODES DN = CIRCULAR, RG = RECTANGULAR, EG = EGG SHAPED, AH= ARCH.



NOTES:

- THIS DRAWING IS ONLY TO BE USED FOR THE DESIGN ELEMENT(S) IDENTIFIED IN THE TITLE BOX. ALL OTHER INFORMATION SHOWN ON THE DRAWING IS TO BE CONSIDERED INDICATIVE ONLY.
- THIS DRAWING IS TO BE READ IN CONJUNCTION WITH ALL OTHER DRAWINGS AND SPECIFICATIONS.
- STORMWATER DRAINAGE TO BE CONSTRUCTED IN ACCORDANCE WITH THE GREATER DUBLIN REGIONAL CODE OF PRACTICE FOR DRAINAGE WORKS AND/OR THE DRAINAGE DESIGN BASIS REPORT FOR CBC BUSCONNECTS.
- ALL LEVELS ARE IN METRES ABOVE ORDNANCE DATUM (MALIN HEAD DATUM). SURVEY GRID AND ALL COORDINATES ARE IN IRISH TRANSVERSE MERCATOR.
- EXISTING DRAINAGE NETWORK BASED ON RECORDS FROM IRISH WATER. PHYSICAL DRAINAGE INVESTIGATIONS MIGHT BE REQUIRED AT DETAILED DESIGN STAGE TO CONFIRM DETAILS OF EXISTING DRAINAGE ALONG THE ROUTE, THE SIZE, NUMBER, DEPTH, AND LOCATION ETC. OF EACH DRAINAGE INFRASTRUCTURE ELEMENT PRESENT ALONG THE ROUTE.
- EXISTING MANHOLE COVERS TO BE ADJUSTED TO MATCH FINISHED SURFACE.
- ALL THE EXISTING GULLIES THAT ARE NOT ADJACENT TO THE PROPOSED KERBLINE WILL BE DEMOLISHED, REPLACED BY SPLIT GULLIES AND RELOCATED AT THE PROPOSED ROAD KERBLINE.
- ALL THE EXISTING GULLY CONNECTIONS TO BE MAINTAINED WHERE POSSIBLE.
- NEW SPLIT GULLIES AND CONNECTIONS WILL BE REQUIRED. NO. OF AND SPACING TO BE DETERMINED DURING DETAILED DESIGN.
- 2NO. OF GULLIES TO BE PROVIDED AT LOW POINTS AND AT LEAST ONE GULLY TO BE PROVIDED IMMEDIATELY UPSTREAM OF PEDESTRIAN CROSSINGS.
- ALL SUDS FEATURES WILL PROVIDE ATTENUATION AND SURFACE WATER QUALITY TREATMENT
- 'NET IMPERMEABLE AREA TO BE ATTENUATED' HAS PERMEABILITY FACTORS APPLIED.

ABBREVIATIONS:

ADR: ALLOWABLE DISCHARGE RATE
Vol_{att}: VOLUME OF ATTENUATION

DISCLAIMER:

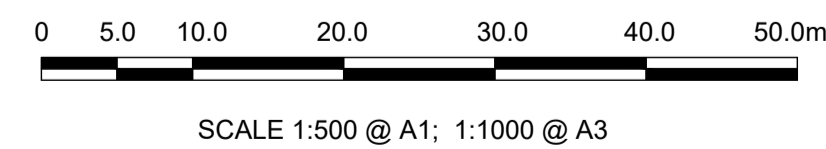
a. © National Transport Authority (NTA) 2022. This drawing is confidential and the copyright in it is owned by NTA. This drawing must not be either loaned, copied or otherwise reproduced in whole or in part or used for any purpose without the prior permission of NTA.

b. This drawing is to be used for the design element identified in the title box. Other information shown is to be considered indicative only. The drawing is to be read in conjunction with all other relevant design drawings.

c. O.S. data used for plans are printed under © Ordnance Survey Ireland Government of Ireland. All rights reserved. Licence Number 2022/OSI_NMA_180 National Transport Authority. All elevations are in metres and relate to OSI Geoid Model (OSGM15) Malin Head. All Co-ordinates are in Irish Transverse Mercator Grid (ITM) as defined by OSI active local GPS station.

d. Information concerning the position of apparatus shown on this drawing is based on drawings supplied by the utility owners and/or the utility works contractor, whilst every care has been taken in the preparation of this drawing, positions should be taken as approximate and are intended for general guidance only and no representation is made by the NTA as to the accuracy, completeness, sufficiency or otherwise of this drawing and the information is based (including but not limited to loss or damage arising as a result of reliance by recipients on the information or any part of it). Any liabilities are hereby expressly disclaimed.

e. The information contained herein has been provided by the NTA but does not purport to be comprehensive or final. Recipients should not rely on the information. Neither the NTA nor any of its directors, officers, employees, agents, stakeholders or advisers make any representation or warranty as to, or accept any liability or responsibility in relation to, the adequacy, accuracy, reasonableness or completeness of the information provided as part of this document or any matter on which the information is based (including but not limited to loss or damage arising as a result of reliance by recipients on the information or any part of it). Any liabilities are hereby expressly disclaimed.



Rev	Date	Drm	Chk'd	App'd	Description
M01	FEB 2023	DS	LS	SMG	ISSUED FOR PHASE 4: PLANNING

Client: **NTA**
Udarás Náisiúnta Iompair
National Transport Authority

Engineering Designer: **CIROD**
TYPSA

Date: FEB 2023
Scale: 1:500 @ A1
1:1000 @ A3

Drawn: DS
Checked: LS
Approved: SMG

Programme Code: BCIDD
Originator Code: ROT
QMS Code:

Programme Title: BUSCONNECTS DUBLIN CORE BUS CORRIDORS INFRASTRUCTURE WORKS			
Drawing Title: KIMMAGE TO CITY CENTRE CORE BUS CORRIDOR SCHEME PROPOSED SURFACE WATER DRAINAGE WORKS			
Drawing File Name: BCIDD-ROT-DNG_RD-0011_XX_00-DR-CD-0014	Sheet Number: 14 of 14	Status: A	Rev: M01

DO NOT SCALE USE FIGURED DIMENSIONS ONLY

\\odubp1u2019171719117-02_WIP08 MODELS01 CAD001 DWG003 STG 3 - STATUTORY PROCESS (M)01 PLANNING11 KIMMAGEBCIDD-ROT-DNG_RD-0011_XX_00-DR-CD-0001.dwg

Dublin
Baile Átha
Cliath